

# Graham Hill Water Treatment Plant Facility Improvements Project

Scoping Meeting for the Environmental Impact Report

---

JULY 19, 2022





# How to Join the Zoom Meeting

---

- **Zoom Link:** <https://us06web.zoom.us/j/87403686774>
- **Webinar ID:** 874 0368 6774
- **By Phone (use any of the following):**
  - +1 253 215 8782, +1 346 248 7799, +1 720 707 2699, +1 301 715 8592, +1 312 626 6799, +1 646 558 8656
  - 877 853 5247 (Toll Free), 888 788 0099 (Toll Free), 833 548 0276 (Toll Free),
  - 833 548 0282 (Toll Free)
- **International numbers available:** <https://us06web.zoom.us/u/kfhF7tgAp>
- **Slides can be accessed online at the link below (scroll to Environmental Docs):**  
<https://www.cityofsantacruz.com/fip>



## Environmental Documents

Environmental documents for the project can be found at this website: <https://www.cityofsantacruz.com/Home/Components/BusinessDirectory/BusinessDirectory/235/2089>

# Agenda

---

- 01** Introduction & Purpose
- 02** Santa Cruz Water Department Overview
- 03** Proposed Project Overview
- 04** Environmental Review Process
- 05** Questions From Audience

# Project Team

---

## City of Santa Cruz Water Department

- Heidi Luckenbach, P.E. – *Deputy Director / Engineering Manager*
- Chris Coburn – *Deputy Director of Operations*
- Matt Zeman – *Associate Engineer*
- Holly Burles – *Project Manager*
- Jessica Martinez-McKinney – *Associate Planner*

## Dudek – CEQA/EIR Consultant

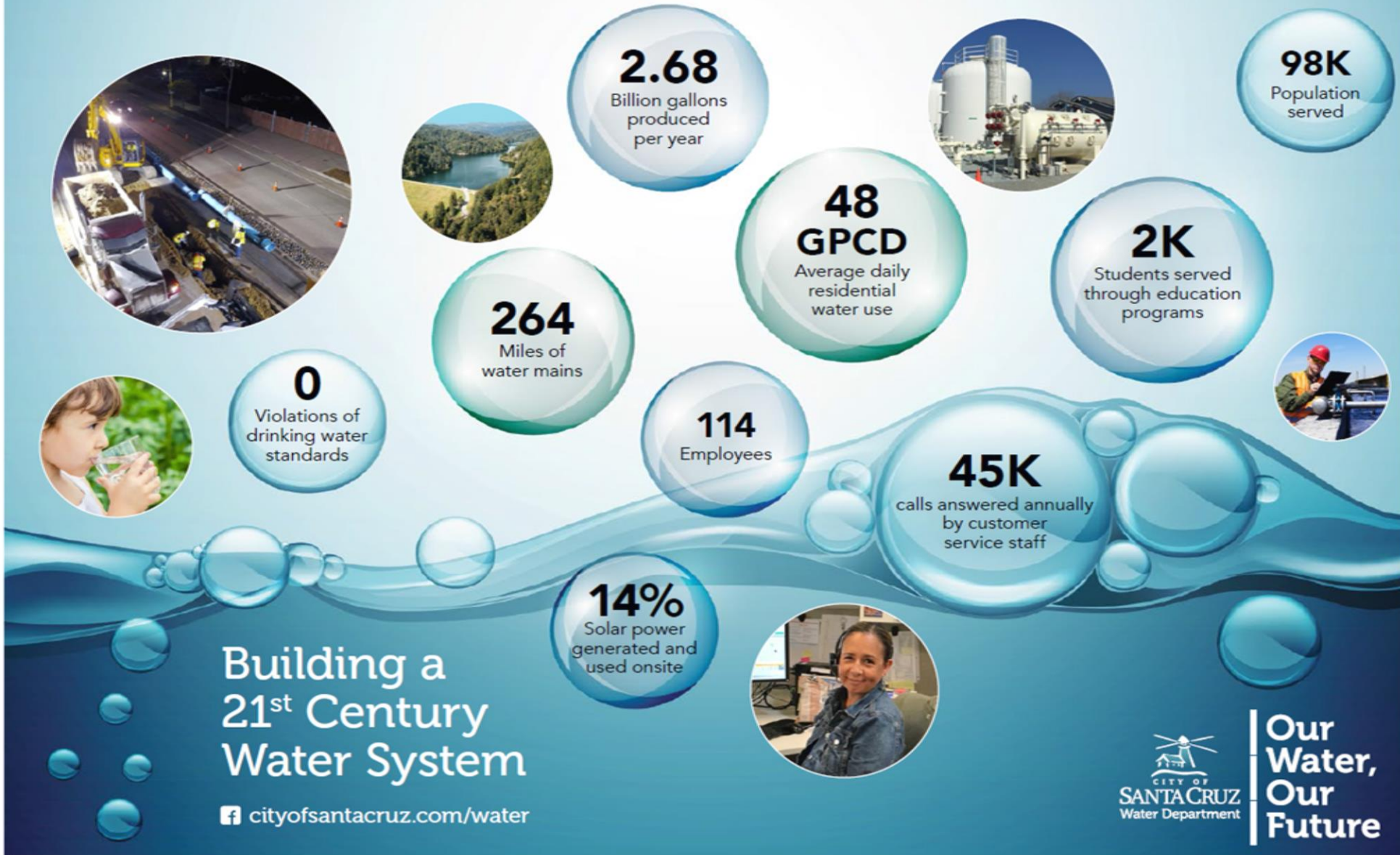
- Ann Sansevero – *Project Director*
- Christine Fukasawa – *Project Manager*
- Kaylan Lamb – *Deputy Project Manager*

# Purpose of EIR Scoping Meeting

---

- Inform the community and agencies about the Graham Hill Water Treatment Plant (GHWTP) Facility Improvements Project (FIP)
- Inform the community about how to submit written comments and future opportunities for input
- Inform the community and agencies about the California Environmental Quality Act (CEQA) Environmental Impact Report (EIR) process and scope

# Santa Cruz Water Department At A Glance





# Water System – Areas Served

## Areas Served

- City of Santa Cruz
- Parts of County
- Parts of Capitola
- Limited service on the north coast

## Population

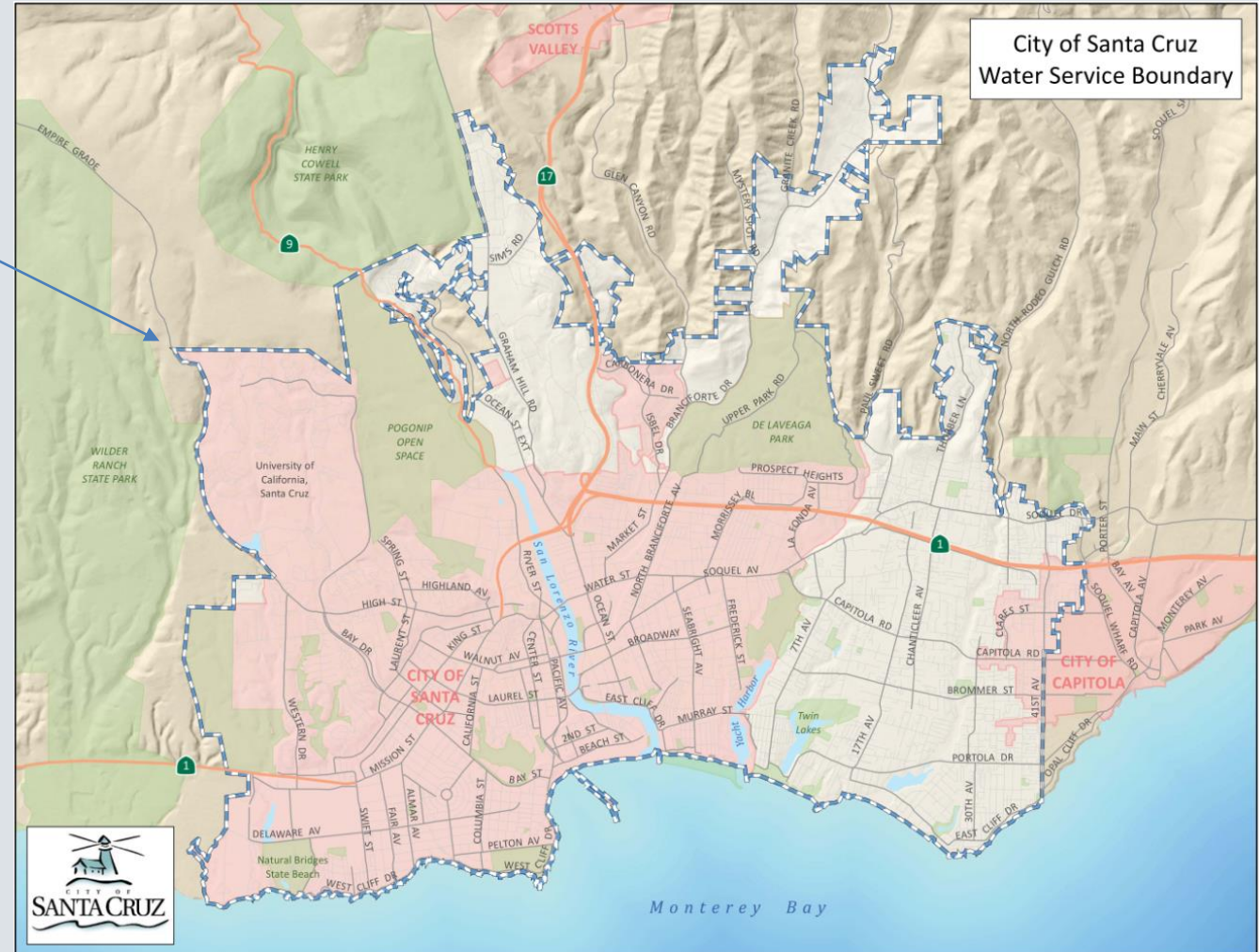
- Over 98,000 residents

## Governing Body

- City Council

## Average Water Production

- 5-7 million gallons per day in winter
- 7-10 million gallons per day in summer



# Water System - Major Supply Facilities

## Treatment Facilities

- Graham Hill Water Treatment Plant
- Beltz Wells Treatment Plants

## Raw Water Conveyances

- North Coast Pipeline
- Newell Creek Pipeline

## Water Sources

- San Lorenzo River
  - Felton Diversion, Tait St. Diversion, Tait St. Wells
- Loch Lomond Reservoir
- North Coast Intakes
  - Liddell Spring, Laguna Creek, Reggiardo Creek, Majors Creek
- Groundwater - Beltz Wells





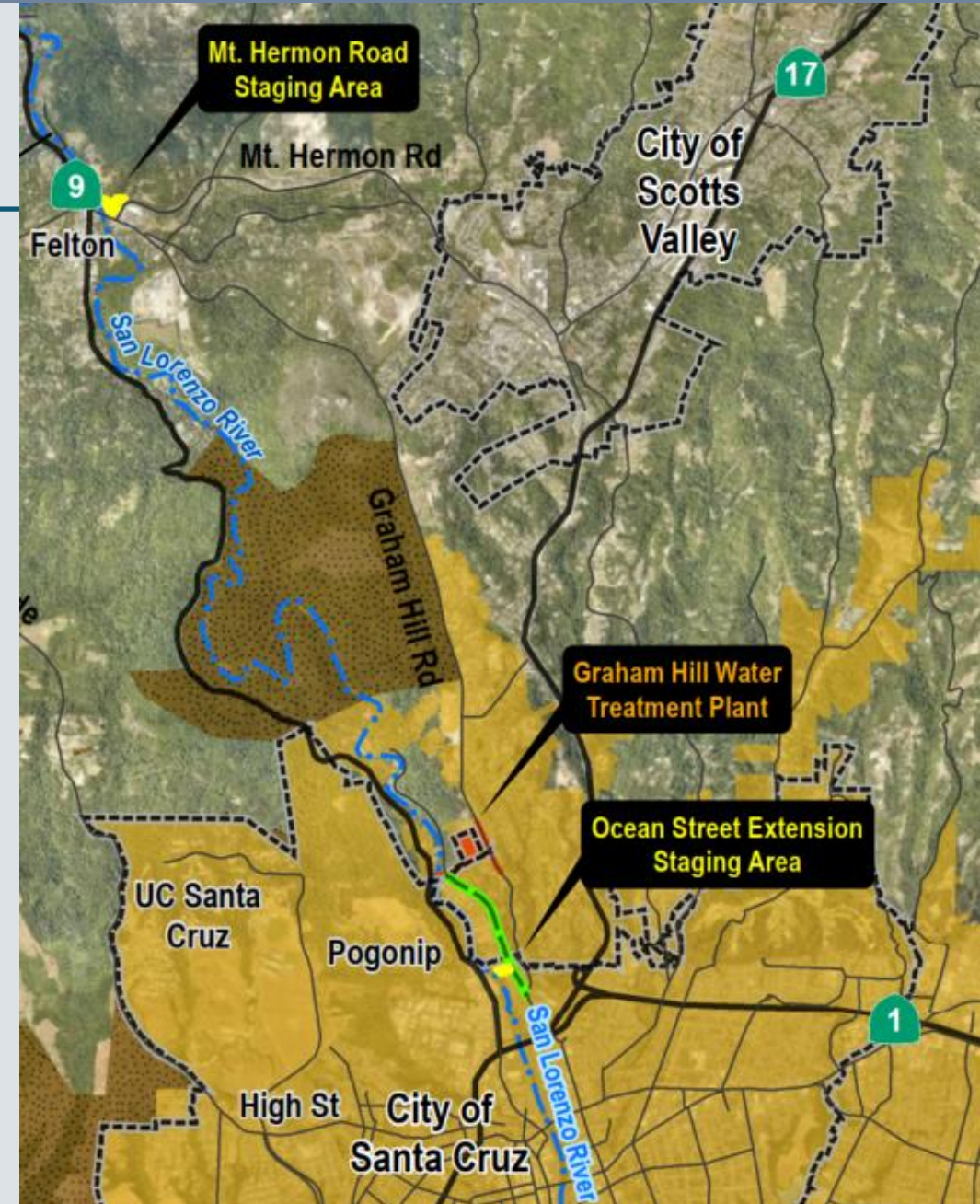
# Project Location

- Primary project location and construction at City's existing Graham Hill Water Treatment Plant
- Project address: 715 Graham Hill Road, Santa Cruz, CA 95060



# Project Location

- 14.88-acre primary Project site:
  - Graham Hill Water Treatment Plant parcel
  - Utility corridor between GHWTP parcel and San Lorenzo River
  - Graham Hill Road right-of-way
- Offsite staging and utility improvements:
  - Mt Hermon Staging Area
  - Ocean Street Extension Staging Area
  - Alternate sanitary sewer lateral improvement area, if required (green line)





# What is the Facility Improvements Project?

- The GHWTP is aged and the facilities outdated.
- The Facility Improvements Project (FIP) will overhaul the City's only surface water treatment system, enabling it to respond to rapidly changing water quality regulations and to weather extremes caused by climate change.
- The FIP will replace existing treatment processes with state-of-the-art technology that will allow the system to maximize all available water supply and treat constituents of emerging concern.





# Graham Hill Water Treatment Plant

- GHWTP (yellow boundary in map) is a conventional water treatment plant
- Uses multiple water sources
- Serves over 95% of City water customers
- Originally constructed in 1960
- Rated capacity of 24 million gallons per day (mgd)
  - Maximum typical demand of 9 to 12 mgd



# Project Purpose and Need

---

- Provide a resilient surface water treatment plant that meets regulatory and climate change challenges
- Upgrade aging infrastructure and treatment processes
- Include infrastructure (buildings) and treatment basins that meet modern seismic standards and provide reliable and efficient performance to meet existing and foreseeable regulations
- Include water treatment processes that are flexible and that can be adapted to meet future regulations and source water quality conditions



# Proposed Project Overview

---

- ***New water treatment and related processes***, to rehabilitate, replace, or augment existing treatment systems. Includes solids dewatering, upgrade of the chemical feed systems, replacement of the washwater supply tank, installation of a new ozone contactor, biological filtration, granular activated carbon, and other improvements. The design capacity of the Proposed Project would be approximately 18 mgd.
- ***New and upgraded buildings***, including a new administration and/or operations building, new maintenance building, HVAC improvements, etc.
- ***Infrastructure and site improvements***, including improvements to piping and stormwater management, electrical and SCADA, vehicular access, landscaping, fencing, and site security.
- ***Removal of existing facilities***, including demolition of some buildings/structures, as needed to address facilities that have gone beyond their useful life and to make room for other new facilities.



# Standard Construction Practices and Avoidance and Minimization Measures

## Standard construction practices

- ⑩ Erosion and air quality controls
- ⑩ Water quality and habitat protection
- ⑩ Cultural resources measures related to inadvertent discovery
- ⑩ Construction noise practices
- ⑩ Fire safety measures
- ⑩ Avoidance and minimization measures

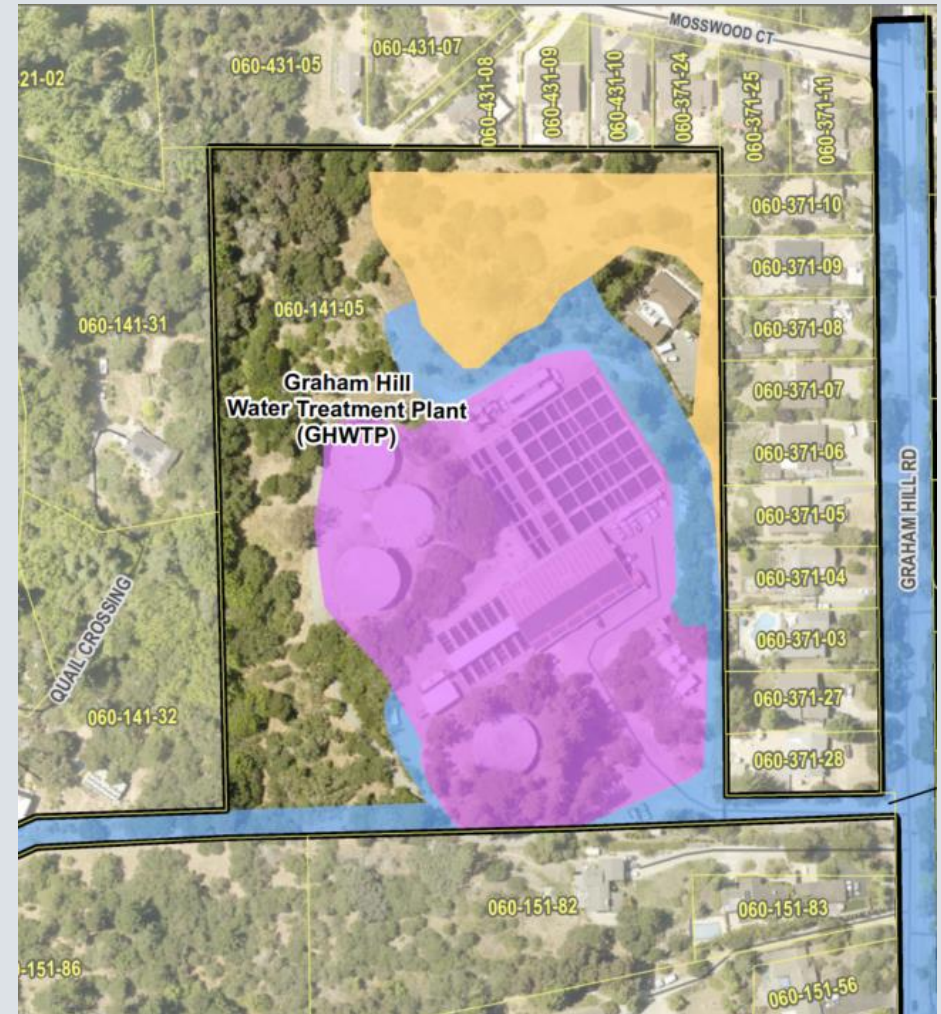
## Avoidance and Minimization Measures

- ⑩ Measures required by Incidental Take Permits (Mt. Hermon June Beetle and O&M Multi-Species HCP)

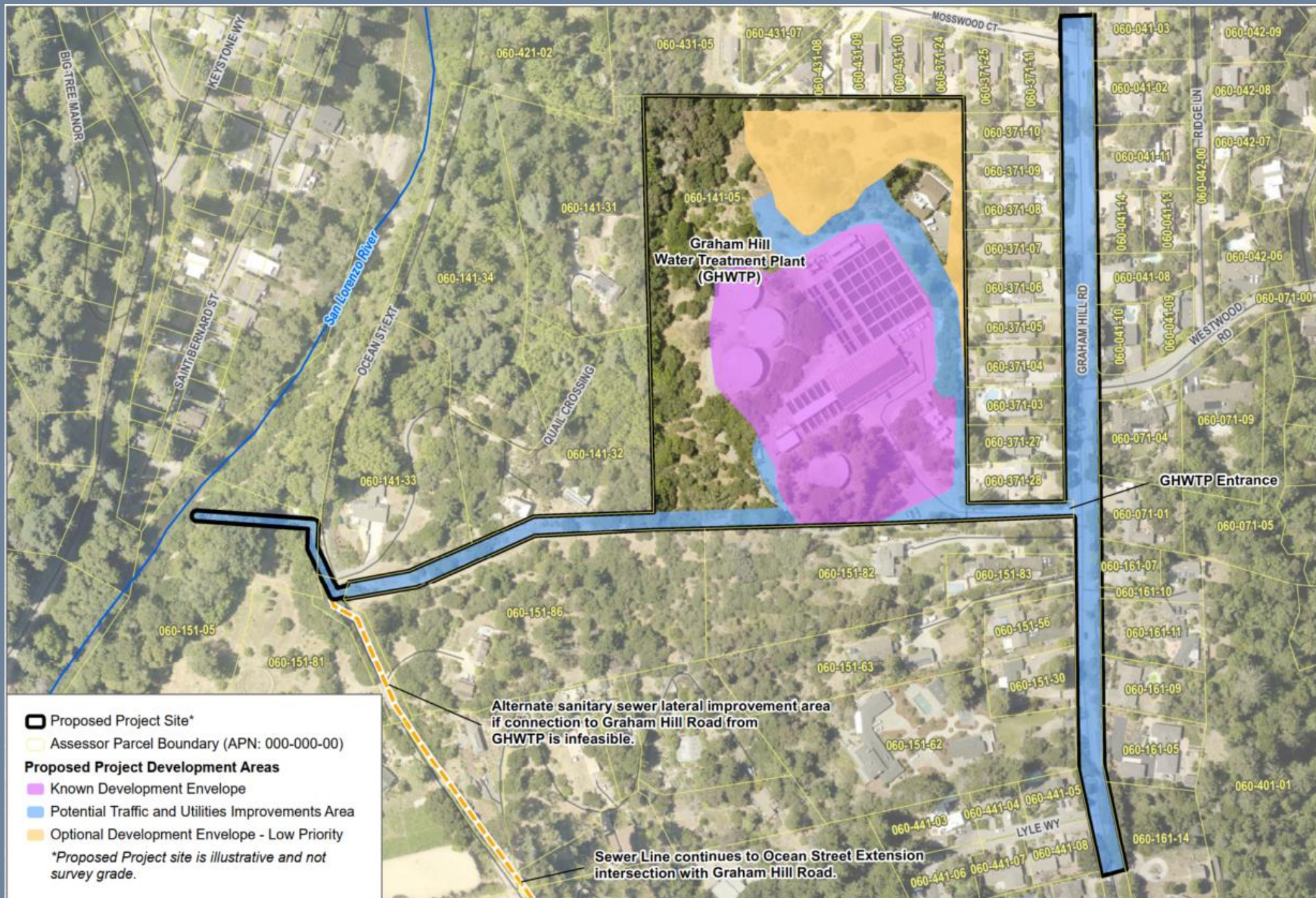
# Proposed Project Development Areas

Project site into is organized into three development areas:

- ***Known Development Envelope*** – Area prioritized for development and permanent facilities
- ***Optional Development Envelope – Low Priority*** – Area that could be developed but that would be less desirable because of location, topography, or other factors
- ***Traffic and Utility Improvements Area*** – Area that could include infrastructure and site improvements; e.g., piping and storm drain system improvements, vehicular access improvements, electrical, and site security









# California Environmental Quality Act (CEQA)

---

## Applies to “projects”

- A discretionary action by a public agency, which has the potential to result in a physical change in the environment, either directly or indirectly

## CEQA Lead Agency – City of Santa Cruz

- City Council is decision-making body

## Purpose

- Inform agency decision-makers and the public of significant project environmental effects
- Identify feasible ways to avoid or reduce significant impacts, including mitigation measures and alternatives
- Provide an opportunity for the public and agencies to comment on the environmental analyses

## “Significant effect on the environment”

- A substantial, or potentially substantial, adverse change in physical conditions within the project area

# CEQA Responsible and Trustee Agencies

---

## Responsible Agencies

- State Water Resources Control Board
- California Central Coast Regional Water Quality Control Board
- Monterey Bay Air Resources District
- County of Santa Cruz
- Local Agency Formation Commission of Santa Cruz County

## Trustee Agency

- California Department of Fish and Wildlife (CDFW)

# EIR Topics

---

- Air Quality/GHG Emissions
- Biological Resources
- Cultural and Tribal Resources
- Energy
- Geology and Soils
- Hazards and Hazardous Materials
- Hydrology and Water Quality
- Land Use and Planning
- Noise
- Transportation
- Utilities
- Wildfire
- Required CEQA Sections
  - *Growth Inducement*
  - *Cumulative Impacts*
  - *Alternatives*
  - *Impacts Not Significant*
  - *Summary of Impacts*



# CEQA EIR Process and Schedule

**PROJECT DESIGN ANTICIPATED TO CONTINUE THROUGH 2024**

*Public Comment Period  
(30 days)*

**JUNE - JULY 2022**

Notice of  
Preparation ★

**SUMMER 2022-2023**

Prepare Draft EIR

*Public Review Period  
(45 days)*

**SUMMER 2023**

Publish Draft EIR  
for Public Review ★

**FALL 2023-WINTER 2024**

Prepare and Distribute  
Final EIR including  
Responses to  
Comments on Draft EIR

*City Council Consideration  
and Certification*

**WINTER-SPRING 2024**

Certify Final EIR,  
Render Decision on  
Project, and File  
Notice of  
Determination

**PHASED CONSTRUCTION  
APPROXIMATELY 2024-2028**

# How to Comment on Scope of EIR

---

*We invite your written comments on:*

- ✓ Environmental issues that should be studied
- ✓ Nature and extent of potential environmental impacts
- ✓ Methods of analysis
- ✓ Measures that could reduce environmental impacts
- ✓ Alternatives that could avoid or reduce impacts



# Where to Submit Written Comments

---

Submit written comments by  
**July 26, 2022, 5:00 PM**

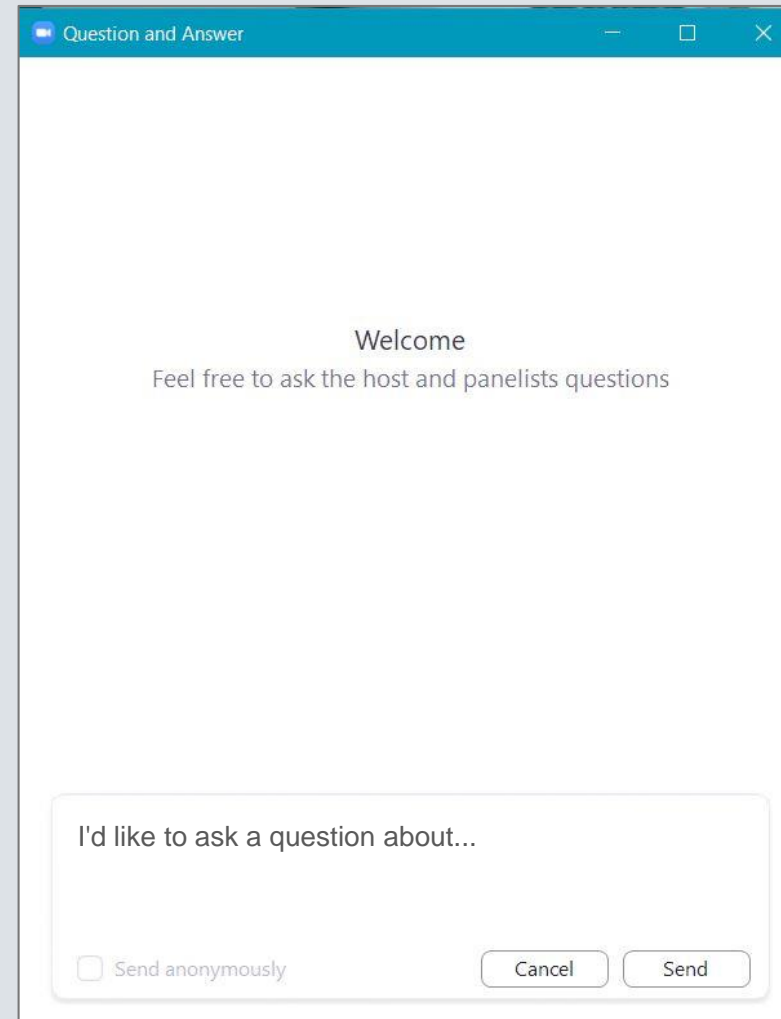
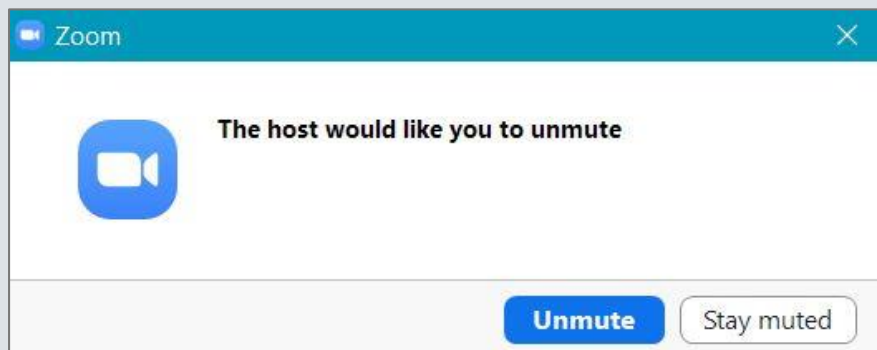
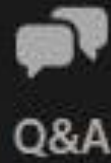
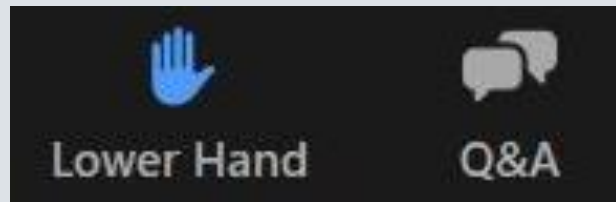
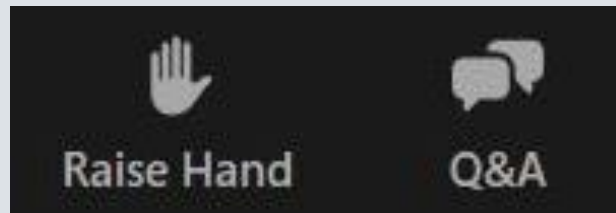
**Jessica Martinez-McKinney, Associate Planner II**

City of Santa Cruz Water Department  
212 Locust Street, Suite C  
Santa Cruz, CA 95060

Email: [jmartinezmckinney@cityofsantacruz.com](mailto:jmartinezmckinney@cityofsantacruz.com)  
(subject line of emails: “FIP Scoping Comments”)

**CLICK HERE**  
**Editable Comment Form**  
City Water Department Website

# How to Ask Questions





# Questions?

Please *“raise your hand”* if you would like to ask a question  
Or to request to speak, please press *“raise hand”* or *“\*9”*

NOP and Project Updates on City’s Website:

<https://www.cityofsantacruz.com/Home/Components/BusinessDirectory/BusinessDirectory/235/2089>