

Newell Creek Pipeline Improvement Project

Scoping Meeting for the
Environmental Impact Report

FEBRUARY 2, 2021

Instructions: Please say your name. Your phone may be muted to facilitate the meeting.



Agenda

- 01 Introduction & Purpose
- 02 Santa Cruz Water Department Overview
- 03 Proposed Project Overview
- 04 Environmental Review Process
- 05 Comments

Meeting is being recorded and will be posted on the City's website

Project Team

City of Santa Cruz Water Department

- Doug Valby – *Project Engineer, Civil Engineer*
- Lewis Kay – *Project Engineer, Engineering Associate*
- Leslie Tice – *Project Environmental Lead*
- Daniel Debrito – *Associate Planner*

Dudek – EIR Consultant

- Stephanie Strelow – *EIR Project Manager*

Purpose of EIR Scoping Meeting

- Inform the community and agencies about the proposed project
- Inform the community and agencies about the EIR process and scope
- Inform the community about how to submit comments and future opportunities for input
- Receive oral comments on “Notice of Preparation” - EIR scope of work

Water System - Service Area

Areas Served

- City of Santa Cruz
- Parts of County
- Parts of Capitola

Population

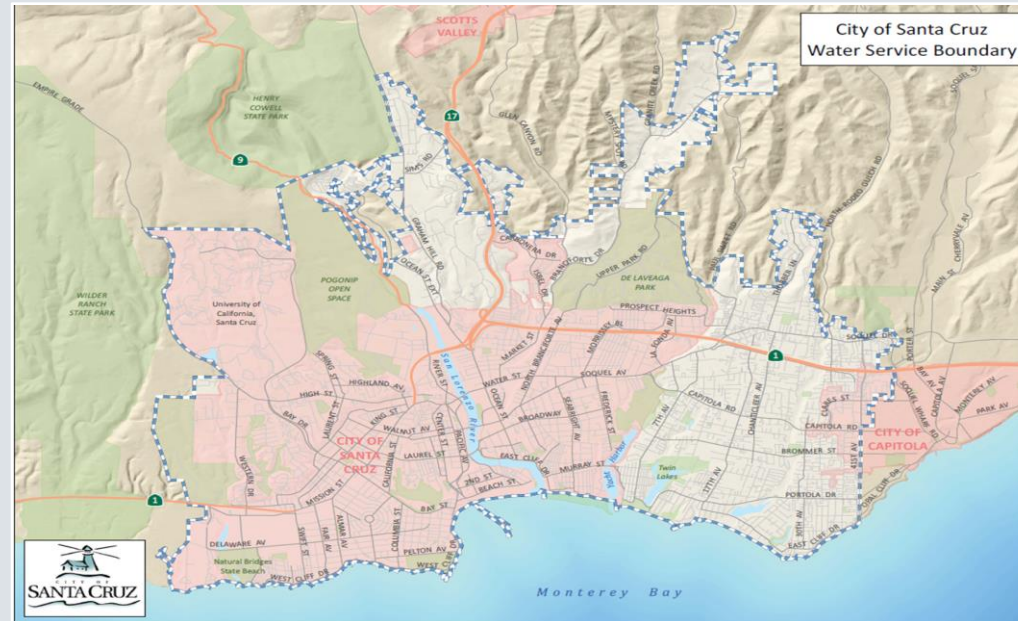
- Over 98,000 residents

Governing Body

- City Council

Average Water Production

- 5-7 million gallons per day in winter
- 7-10 million gallons per day in summer



Water System

Major Supply Facilities

Treatment Facilities

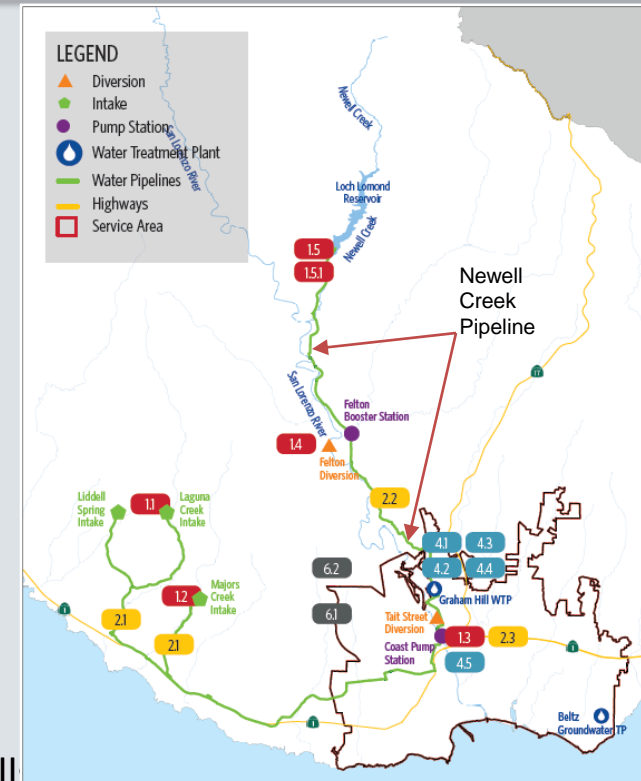
- Graham Hill Water Treatment Plant
- Beltz Wells Treatment Plants

Raw Water Conveyances

- North Coast Pipeline
- Newell Creek Pipeline

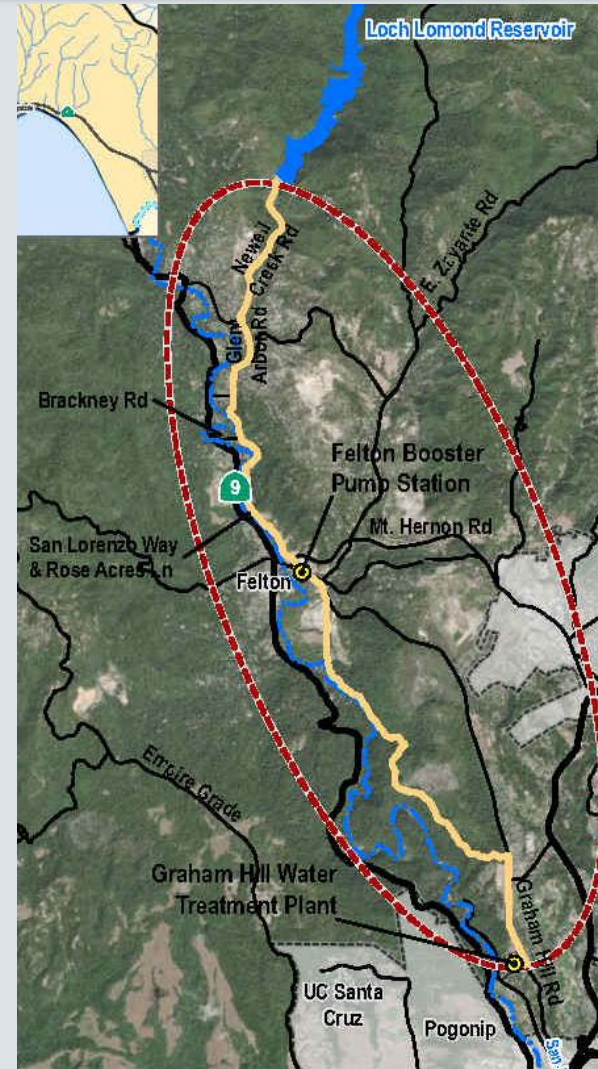
Water Sources

- Loch Lomond Reservoir
- San Lorenzo River
 - Felton Diversion, Tait St. Diversion, Tait St. Well
- North Coast Intakes
 - Liddell Spring, Laguna Creek, Reggiardo Creek, Majors Creek
- Groundwater - Beltz Wells



Newell Creek Pipeline

- 9-mile pipeline
- Located in unincorporated Santa Cruz County
- Extends from Loch Lomond Reservoir to the Graham Hill Water Treatment Plant
- Conveys untreated water to the Loch Lomond Reservoir from the Felton Diversion on the San Lorenzo River
- Conveys untreated water from Loch Lomond Reservoir to the GHWTP



Project Purpose and Need

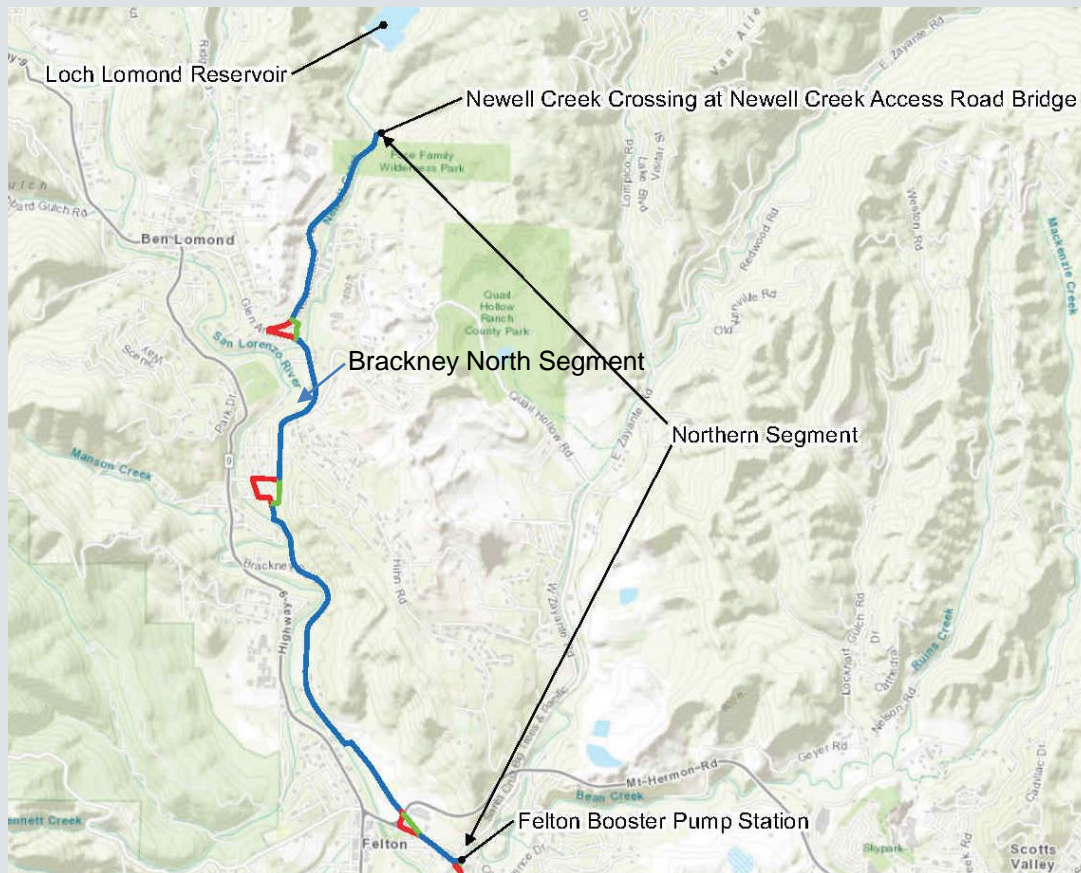
- Constructed in 1960, reaching the end of its reliable life
- Increased frequency of line breaks and other damages
- Difficult access for maintenance
- Purpose of Proposed Project
 - *Restore reliability*
 - *Provide improved access for maintenance and repair*

Proposed Project

- Replace 8.75 miles with a new 24-inch diameter Polyvinylchloride (PVC), Ductile Iron, or High Density Polyethylene (HDPE) pipeline
- Install within existing road pavement, road right-of-way, and/or easements
- Abandon existing pipeline after installation of new pipeline
- Installation of air release valves and minor appurtenances
- Restoration of pavement and other surfaces to pre-project condition or better

Northern Segment

Loch Lomond Reservoir to Felton Booster Pump Station



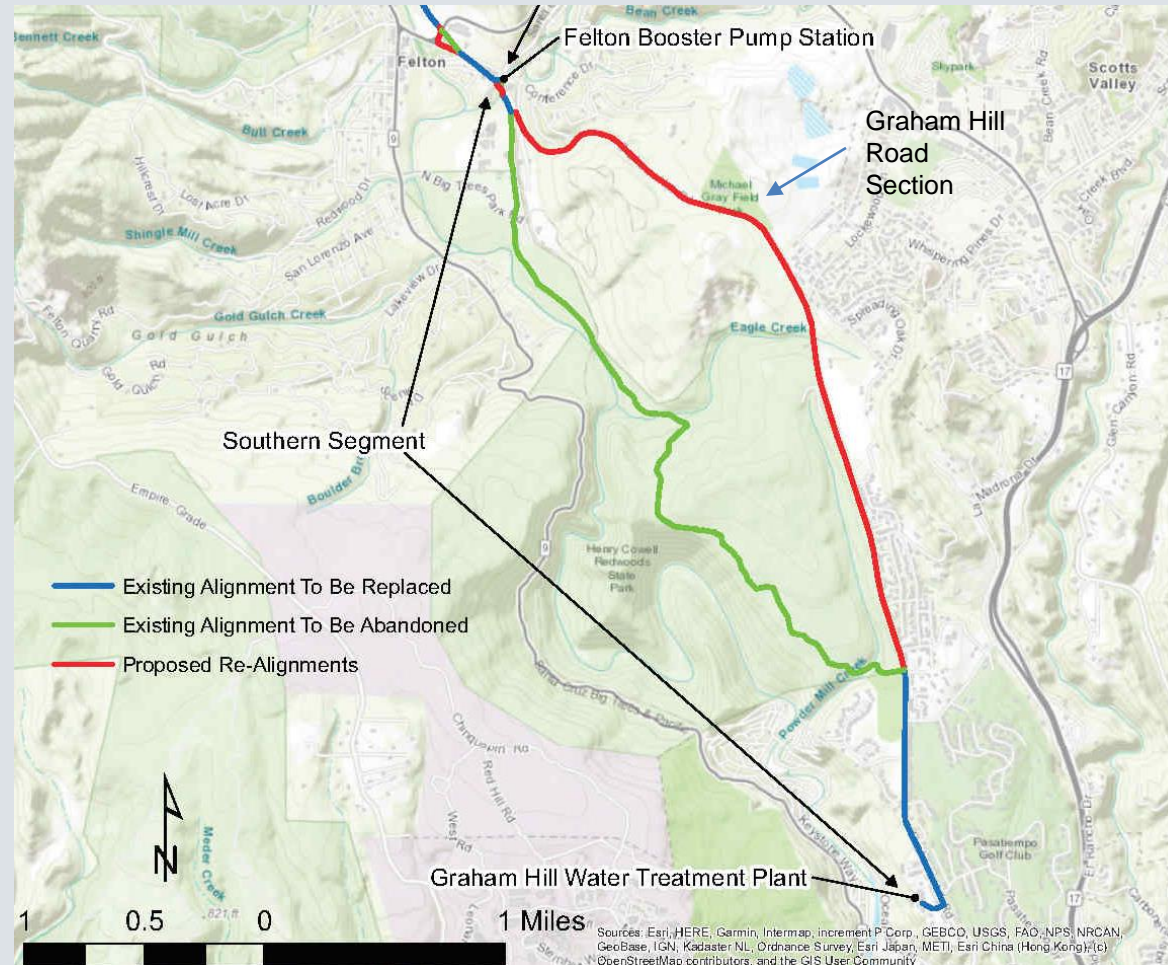
Existing alignment
to be replaced

Existing alignment
to be abandoned

Proposed
Realignments

Southern Segment

Felton Booster Pump Station to Graham Hill Water Treatment Plant



Construction

- Phased – Approximately 2022 to 2028
- Highest priority sections
 - Brackney North section in Northern Segment
 - Graham Hill Road sections in Southern Segment
- Generally conventional (open cut) trenching methods
 - 60 to 100 linear feet be installed per day on average
- Special construction techniques
 - Brackney area
 - Creek crossings
- Avoidance of disruption of creek channels

California Environmental Quality Act (CEQA)

Applies to “projects”

- A discretionary action by a public agency which has the potential to result in a physical change in the environment, either directly or indirectly

CEQA Lead Agency – City of Santa Cruz

- City Council is decision-making body

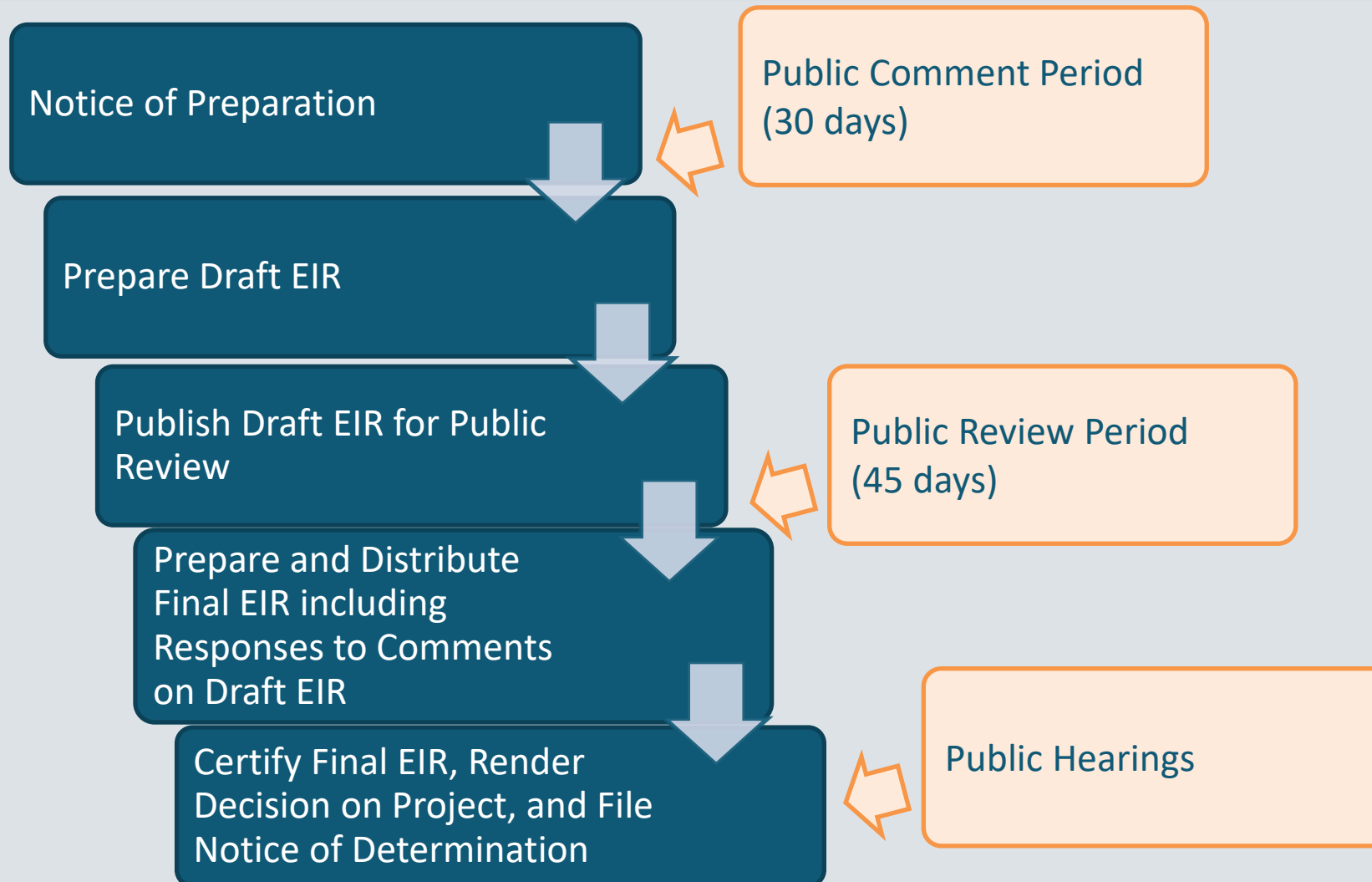
Purpose

- Inform agency decision-makers and the public of significant project environmental effects
- Identify feasible ways to avoid or reduce significant impacts, including mitigation measures and alternatives
- Provide an opportunity for the public and agencies to comment on the environmental analyses

“Significant effect on the environment”

- A substantial, or potentially substantial, adverse change in physical conditions within the project area

EIR Process per CEQA



EIR Topics

- Air Quality/GHG Emissions
- Biological Resources
- Cultural and Tribal Resources
- Energy
- Geology and Soils
- Hazards and Hazardous Materials
- Hydrology and Water Quality
- Land Use and Planning
- Noise
- Transportation
- Wildfire
- Required CEQA Sections
 - Growth Inducement
 - Cumulative Impacts
 - Alternatives
 - Impacts Not Significant
 - Summary of Impacts

EIR Schedule

CEQA Scoping

January 2021

*Public comment
period (30 days)*

Draft EIR Public Review

Fall 2021

Public review period (45 days)

Final EIR

Winter 2022

City Council Consideration
And Certification

Spring 2022

How to Provide Comments



Provide oral comments tonight



Provide written comments by February 16, 2021



We invite your comments on:

- Environmental issues that should be studied
- Nature and extent of potential environmental impacts
- Methods of analysis
- Measures that could reduce environmental impacts
- Alternatives that could avoid or reduce impacts

How to Provide Written Comments

Submit written comments by **February 16, 2021, 5:00 PM**

Doug Valby

Associate Civil Engineer

City of Santa Cruz Water Department

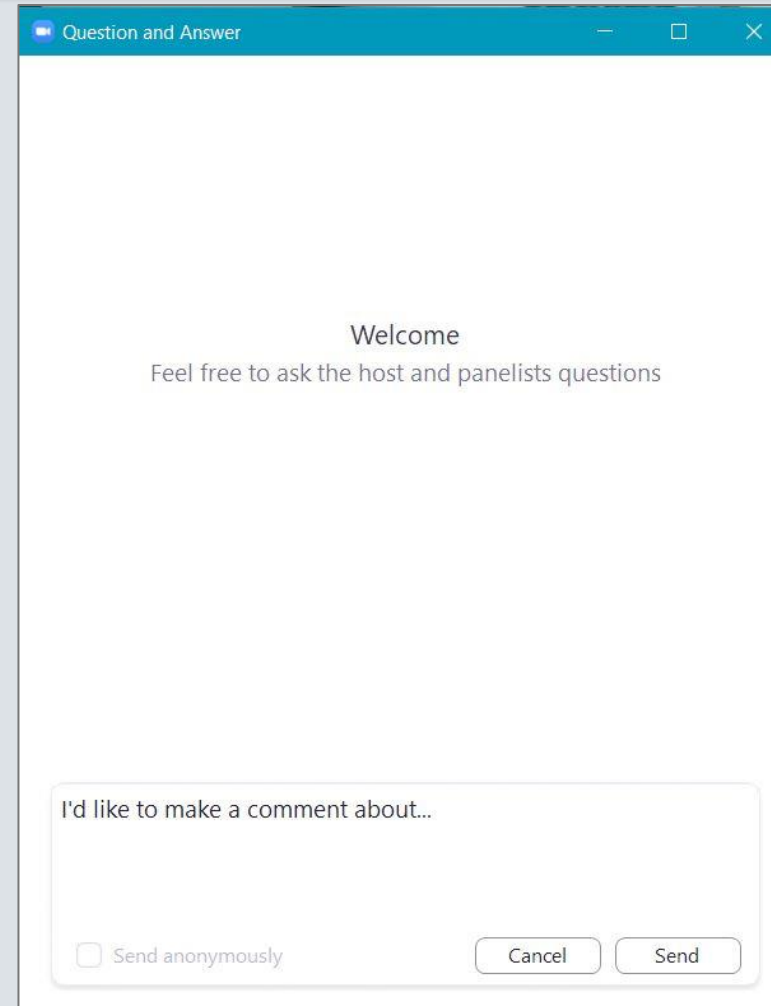
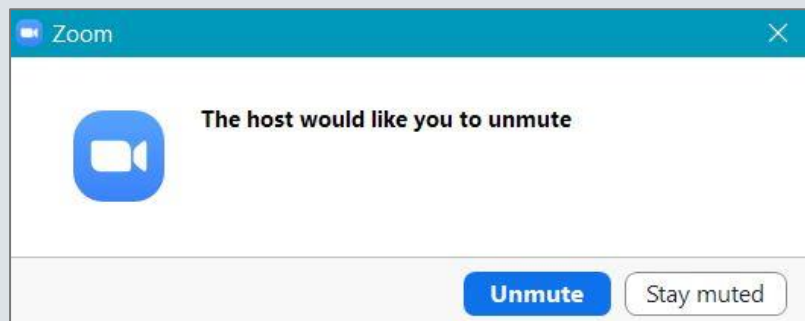
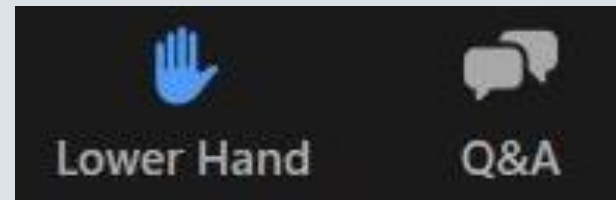
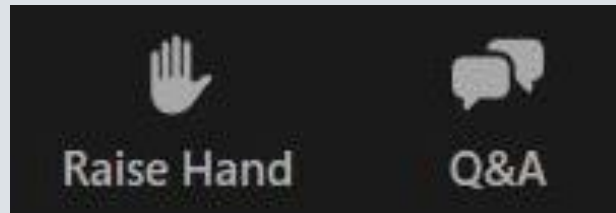
212 Locust Street, Suite C

Santa Cruz, CA 95060

Email: dvalby@cityofsantacruz.com

(subject line of emails: “**Newell Scoping Comments**”)

How to Provide Comments Tonight



Public Comments

Please “raise your hand” if you would like to provide an oral comment

NOP and Project Updates on City’s Website:

<https://www.cityofsantacruz.com/government/city-departments/water/online-reports/environmental-documents>