



DATE: August 19, 2010

TO: Public Agencies, Organizations and Interested Parties

FROM: John Everett, Environmental Projects Analyst

SUBJECT: Notice of Availability of a Draft Environmental Impact Report in Compliance with Title 14, Section 15082(a), 15103, and 15375 of the California Code of Regulations

Pursuant to the State of California Public Resources Code and the “Guidelines for Implementation of the California Environmental Quality Act of 1970” as amended to date, this is to advise you that the City of Santa Cruz Water Department has prepared a Draft Environmental Impact Report on the following project:

Project Name: Beltz Well No. 12 – Research Park Drive

Agencies: The City of Santa Cruz Water Department requests your agency’s comments on the environmental information relevant to your agency’s statutory responsibilities in connection with the proposed project, in accordance with California Code of Regulations, Title 14, Section 15082(b).

Organizations And Interested Parties: The City of Santa Cruz Water Department requests your comments and concerns regarding the environmental issues associated with construction and operation of the proposed project.

Location: The Proposed Project site is located on a small parcel (APN 030-18-170) at the corner of Research Park Drive and Cory Street in the unincorporated community of Soquel, Santa Cruz County, California (see Figure 1, Project Location Map, and Figure 2, Proposed Project Site).

Project Site Description: The Proposed Project site is currently vacant, surrounded by a chain link fence, and undeveloped. Adjacent to the site, in a public right of way on Cory Street, is a City of Santa Cruz monitoring well. The Proposed Project site is located in an area designated as Service Commercial under the County of Santa Cruz General Plan. The adjacent surrounding properties are developed with commercial and light industrial land uses.

Project Purpose: The purpose of the Proposed Project is to maintain the City’s historic groundwater production, to locate the new well farther inland to protect the Purisima aquifer from the threat of saltwater intrusion, and to improve the Live Oak Well system’s reliability and flexibility of the City’s groundwater system.

Project Description: The Proposed Project (Beltz Well No. 12 and associated treatment facilities) would be installed on a vacant lot located at the northeast corner of the intersection of Research Park Drive and Cory Street in Soquel, California. As shown in the Proposed Project Conceptual Site Plan, the new water well would include the following components: (1) a pump and chemical storage building, approximately 40 feet by 20 feet and approximately 12 feet in height; (2) an iron and manganese treatment system consisting of pressurized filter tanks, approximately 35 feet by 9 feet and approximately 10 feet in height; (3) a backwash tank for the iron and manganese treatment, approximately 16 feet in diameter and approximately 15 feet in height; (4) a sand separator, approximately 7 feet in height; and (5) station piping, including, treated water pipeline, sewer connections, and new stormwater drainage facilities that would connect to existing facilities in Research Park Drive.

The new well will be drilled to an approximate depth of 320 feet bgs to provide up to approximately 700 gpm of water. Pumping from Beltz Well No. 12 could be required for a period of up to seven months, corresponding to approximately April 15 to November 15. Production from Beltz Well No. 12 would not increase the City's long term historic Purisima groundwater extraction, but would instead redistribute a portion of existing City production inland to protect the aquifer from seawater intrusion. The City's maximum future Purisima groundwater production with the addition of Beltz Well No. 12, will be up to 520 acre-ft/yr in non-critically dry years and up to 645 acre-ft/yr in critically dry years.

Environmental Issues: The City of Santa Cruz Water Department has prepared an EIR that describes the potential environmental effects of the proposed project.

Public Review Period: The City of Santa Cruz Water Department has determined to make this NOA and EIR available for public review and comment pursuant to California Code of Regulations, Title 14, Section 15082(b). The City of Santa Cruz Water Department will accept written comments on the EIR between August 23, 2011 and October 6, 2011.

Responses And Comments: By 5:00 p.m., October 6, 2011, please indicate a contact person for your agency or organization and send your comments to:

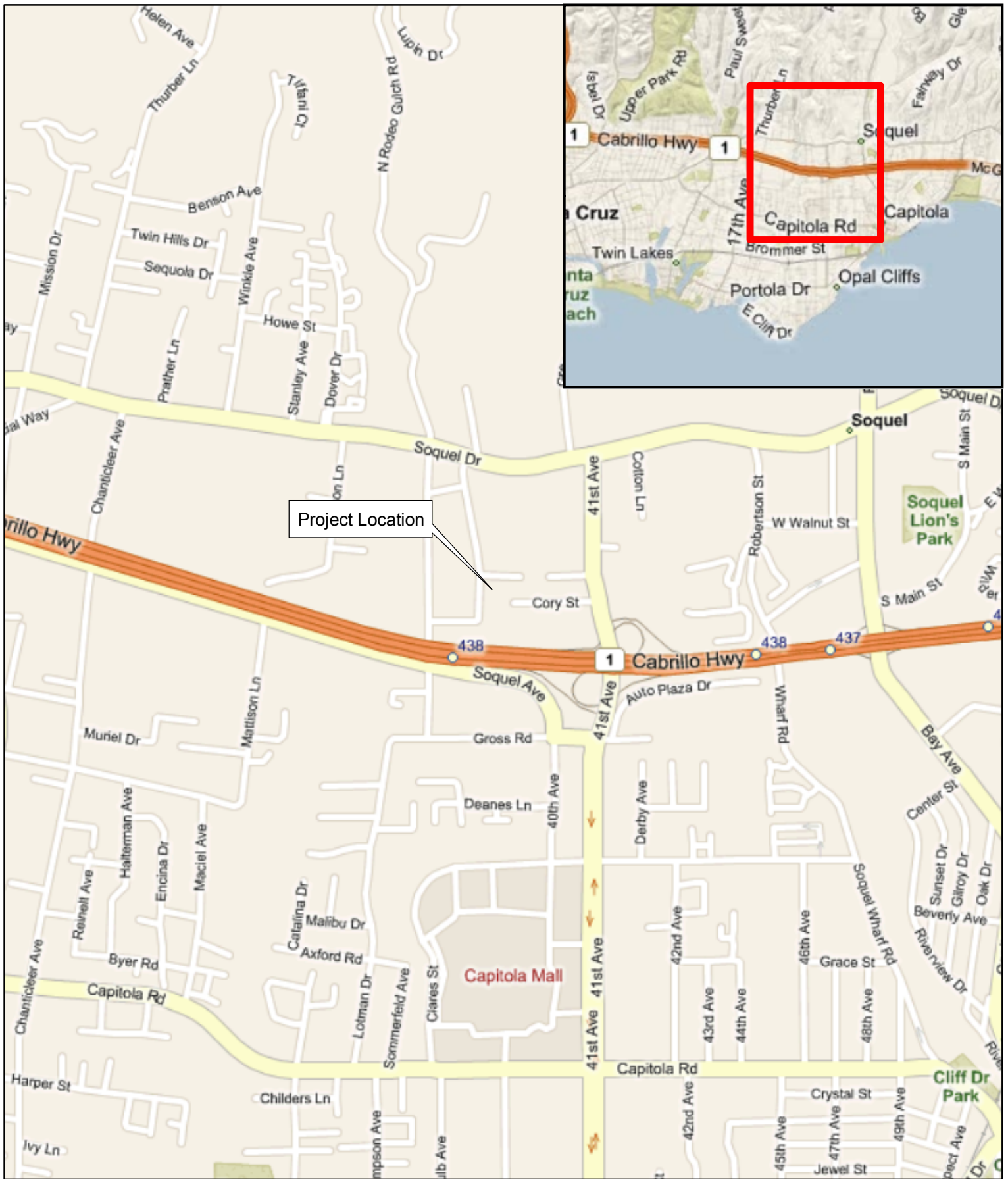
John Everett, Environmental Projects Analyst
City of Santa Cruz, Water Department
212 Locust Street Suite C, Santa Cruz CA 95060

Comments may also be sent by email at jeverett@cityofsantacruz.com

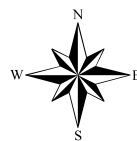
Comments may also be sent by FAX at (831) 420-5201

Document Availability: The EIR is available for public review during regular business hours at the locations listed below.

- City of Santa Cruz Water Department, Engineering Division, 212 Locust Street Suite C, Santa Cruz CA 95060
- Santa Cruz Public Library, Capitola Branch, 2005 Wharf Road, Capitola, CA 95010
- Santa Cruz Public Library, Central Branch, 224 Church Street, Santa Cruz, CA 95060
- City of Santa Cruz website (www.cityofsantacruz.com/index.aspx?page=1286)



Chambers Group, Inc.

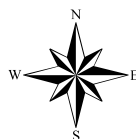


0 360 720 1,440 2,160 2,880 Feet

Figure 1
Project Location



Chambers Group, Inc.



0 80 160 320 480 640 Feet

Figure 2
Proposed Project Site

PROPOSED
CONCEPTUAL SITE PLAN
BELTZ WELL 12
RESEARCH PARK DRIVE
SOQUEL, CALIFORNIA • SANTA CRUZ COUNTY
APRIL 12, 2010

