



## **WATER DEPARTMENT**

212 Locust Street, Suite A, Santa Cruz, CA 95060 ♦ 831-420-5200 ♦ [www.cityofsantacruz.com](http://www.cityofsantacruz.com)

April 3, 2025

### **Subject: Santa Cruz Water Department New Fire Service Backflow Device Installations**

The City of Santa Cruz Water Department (SCWD) is now requiring all new and existing fire service installations to include an SCWD-approved above-ground testable backflow device, as required to meet the State Water Resources Control Board's new Cross-Connection Control Policy Handbook, which has replaced the California Code of Regulations, Title 17. All public water agencies in California are now required to comply with this requirement.

All existing fire services that do not already have above-ground testable backflow devices are required to be retrofitted by July 1, 2034. The SCWD currently has approximately 2,500 existing 2" and smaller residential fire services, which do NOT meet the new regulations. The SCWD has a program in development that will initially require these retrofits when a City/County building permit application is submitted and/or the sale of property. Retrofit notices to affected water customers will be mailed once a building permit application has been submitted and/or the sale of property.

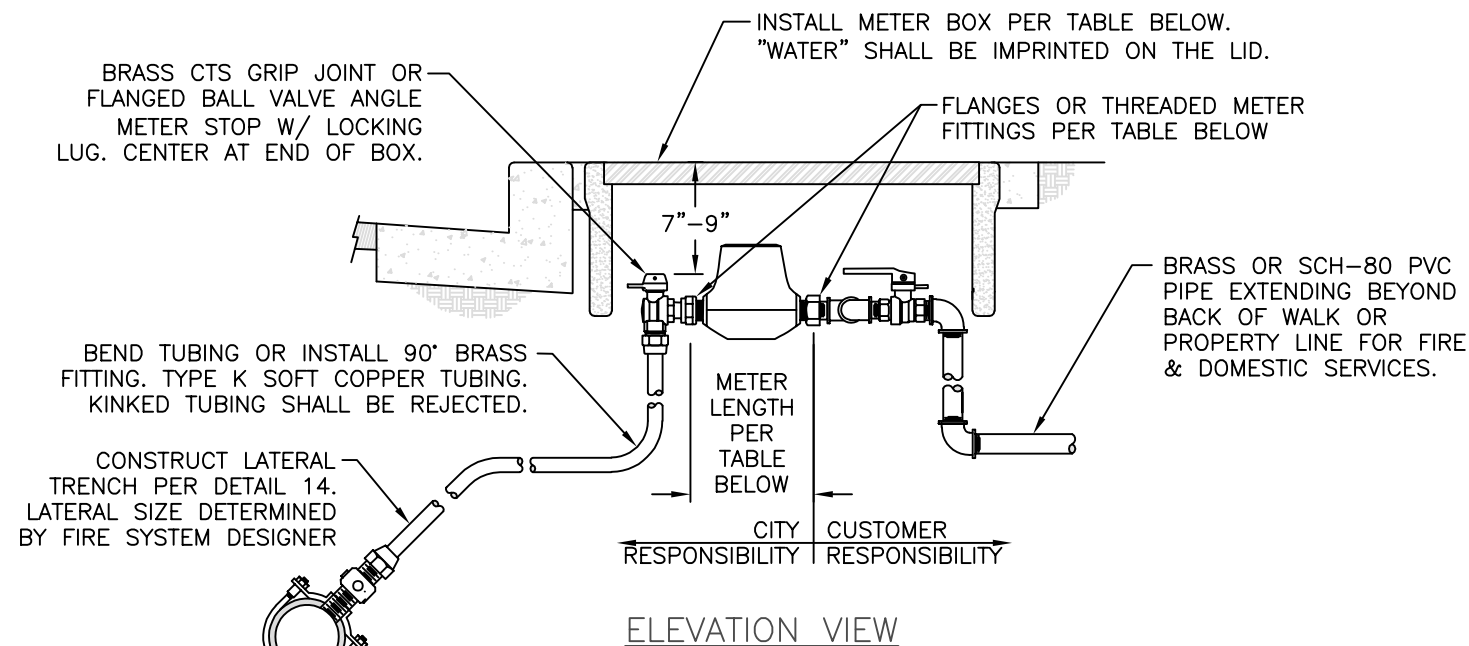
A part of the retrofit program will include the removal of the existing buried non-testable backflow device and requiring customers to install a new above-ground approved backflow device as per the SCWD revised Standard Detail 4A and existing Standard Detail 8 or new Standard Detail 9A.

For any questions, please contact the City of Santa Cruz Water Engineering Division at 831-420-5210 or [waterengineering@santacruzca.gov](mailto:waterengineering@santacruzca.gov).

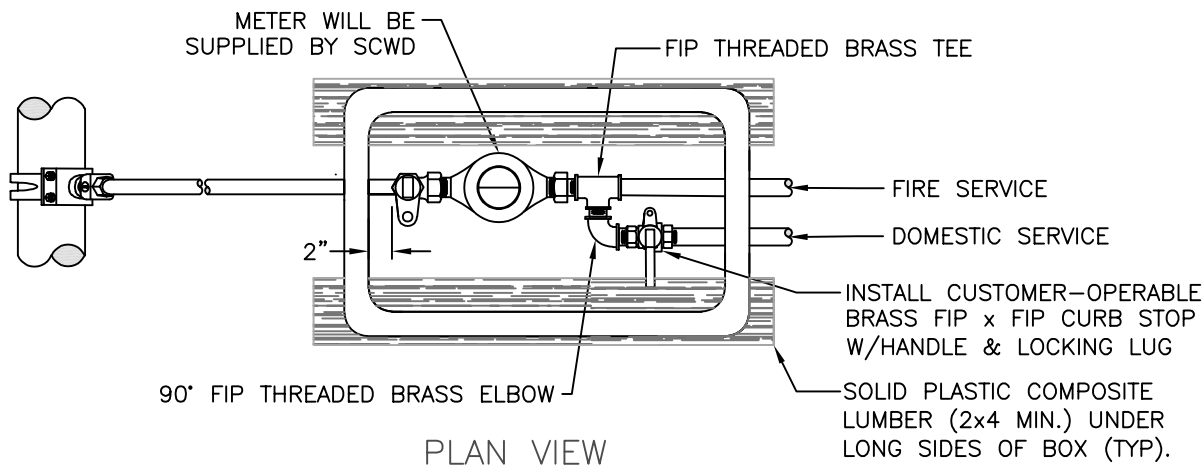
#### **Attachments:**

Standard Detail 4A – Domestic x Fire Combo Service Installation  
Standard Detail 8 – Standard 2in & Smaller Backflow Installation  
Standard Detail 9A – Vertical 2in & Smaller Fire Service Backflow Installation  
SCWD Approved List of 2in & Smaller Double-Check Backflow Devices

DRAWING No. 3274 A  
\\fsare3\wt\WTE\Standard Specifications & Details\Water Standard Details\2024 Revisions\2024\_StdDtl\_Revisions\_recover.dwg



STANDARD SERVICE  
CONNECTION PER  
DETAIL 1



**\*\*REQUIRED: DETAIL 8 OR 9A - 2-INCH AND SMALLER DOUBLE-CHECK  
FIRE SERVICE BACKFLOW DEVICE INSTALLATION\*\***


METER SIZE AND TYPE DETERMINED BY FS SYSTEM DESIGNER	BOX TYPE	METER LENGTH*
¾" THREADED	"16"	7¾"
1" THREADED	"36"	11"
1½" FLANGED	"36"	13¾"

\*METER LENGTH INCLUDES SPACE FOR TWO 1/8" METER GASKETS

BOX TYPE	NON-TRAFFIC	TRAFFIC
TYPE "16"	CHRISTY B16 BOX W/ B16D LID OR EQUAL	CHRISTY B1017 BOX W/ B1017-JH LID OR EQUAL
TYPE "36"	CHRISTY B36 BOX W/ B36D LID OR EQUAL	CHRISTY B1730 BOX W/ B1730-51JH LID OR EQUAL

**NOTES**

- BRASS FITTINGS, VALVES AND PIPE SHALL CONSIST OF LOW-LEAD BRASS ALLOY AND SHALL HAVE A MINIMUM WORKING PRESSURE OF 150 PSI.
- FIRE SERVICE LINE SHALL BE TESTED FOR LEAKS PRIOR TO BACKFILLING.
- CUSTOMER SIDE FIRE SERVICE PIPE TYPE AND CONNECTION SHALL MEET LOCAL FIRE AGENCY REQUIREMENTS. ALL PIPE FITTINGS BETWEEN CITY METER & BACKFLOW DEVICE SHALL BE NSF 61 CERTIFIED MATERIAL.

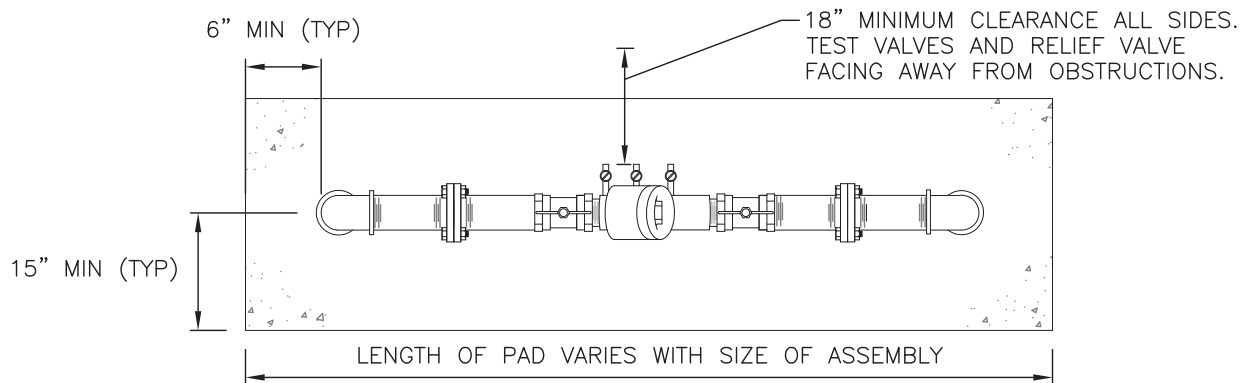
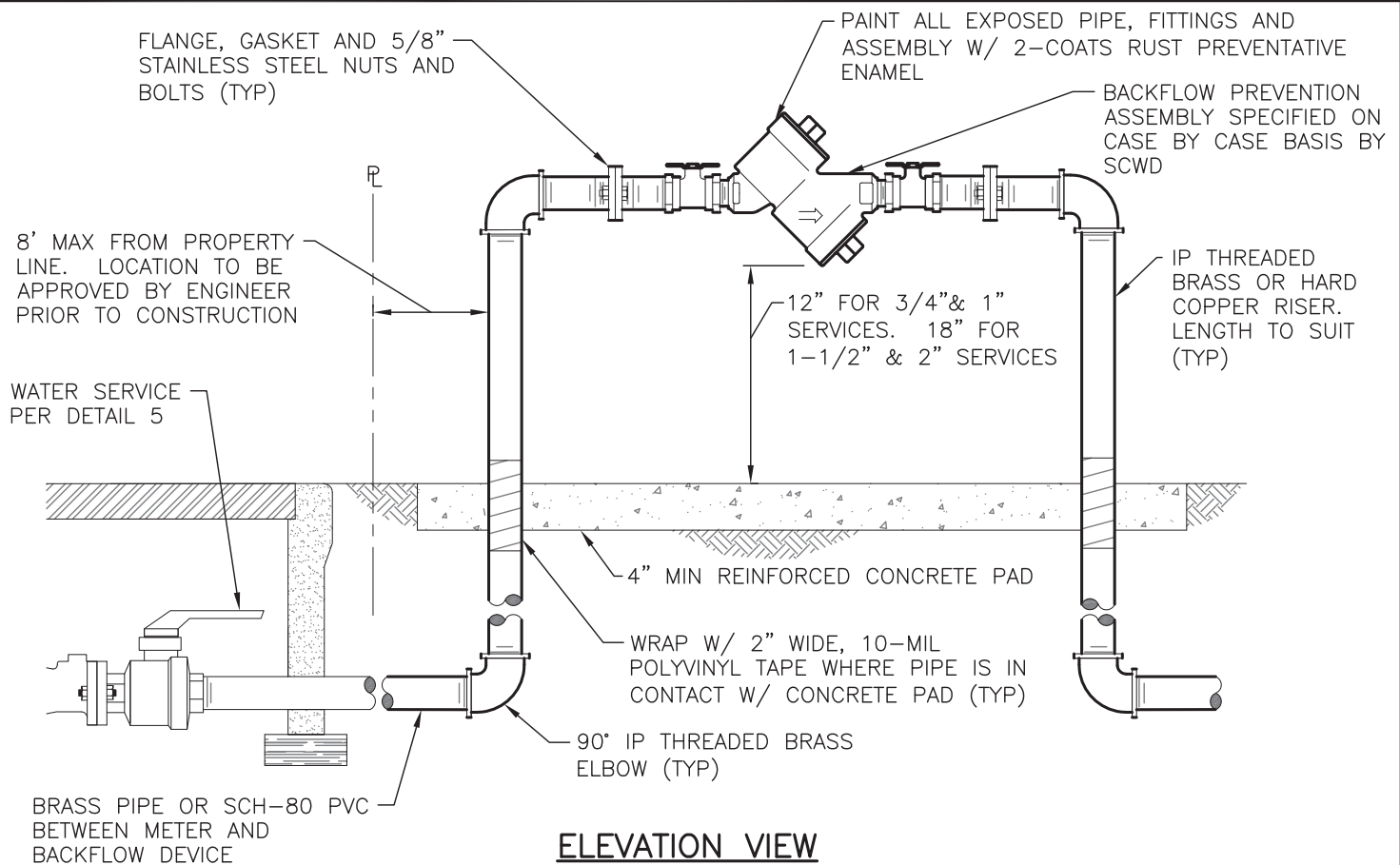


**WATER DEPARTMENT**  
CITY OF SANTA CRUZ, CALIFORNIA

**DETAIL 4A**  
DOMESTIC BY FIRE COMBINATION  
SERVICE INSTALLATION



NOT TO SCALE

APPROVED *Leider Rivera* RCE c72965

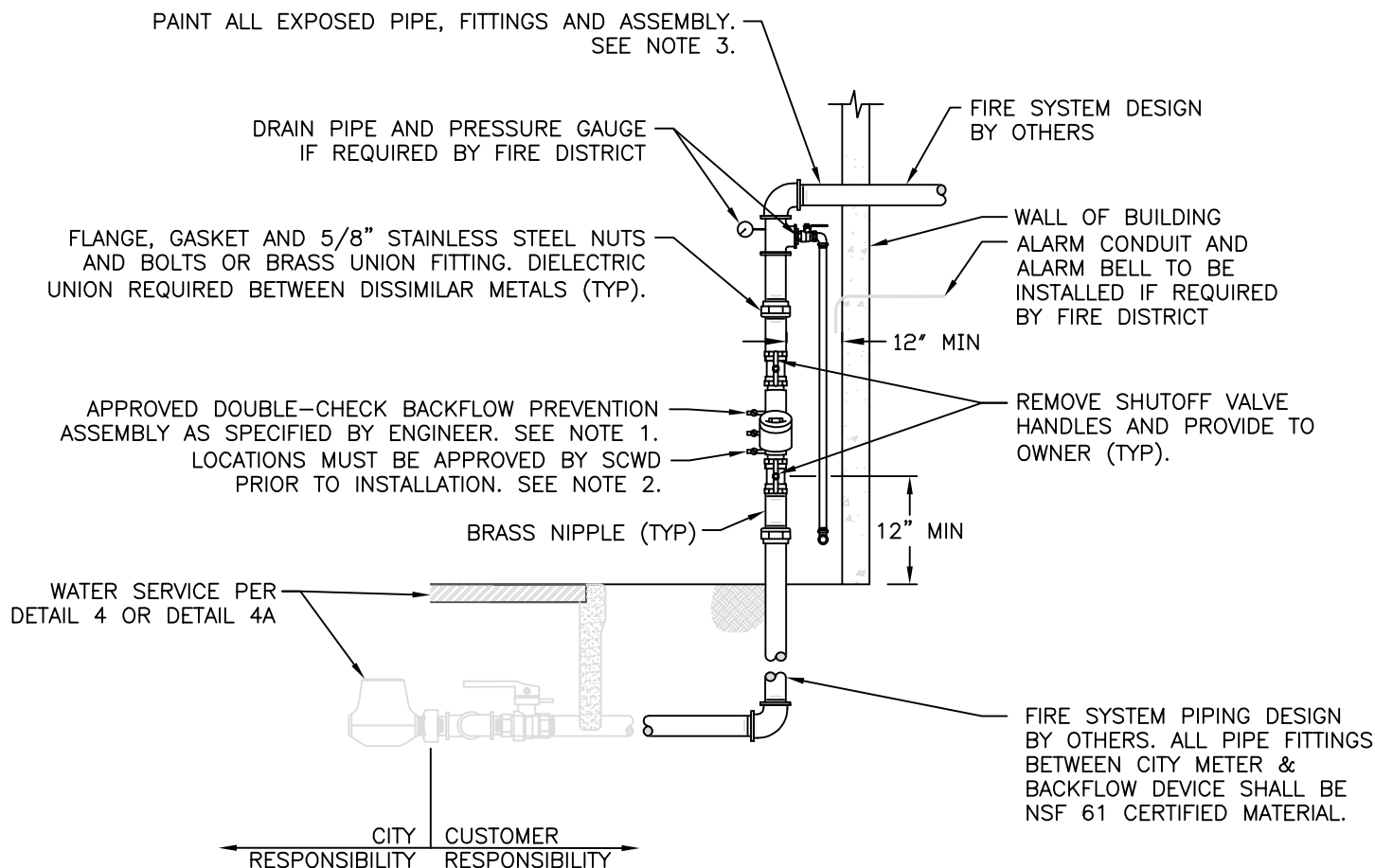


#### NOTES

1. APPROVED BACKFLOW ASSEMBLY SHALL BE INSTALLED SUCH THAT IT IS READILY ACCESSIBLE FOR REPAIR AND INSPECTION.
2. BRASS FITTINGS, VALVES AND PIPE SHALL CONSIST OF LOW-LEAD BRASS ALLOY AND SHALL HAVE A MINIMUM WORKING PRESSURE OF 150 PSI.
3. BRASS OR PLASTIC PLUGS SHALL BE INSTALLED ON ALL TEST PORTS.
4. ALL ABOVE GROUND PIPE, FITTINGS AND ASSEMBLY SHOULD BE PAINTED WITH TWO COATS OF ENAMEL.
5. AN ENCLOSURE OR CAGE MAY BE INSTALLED AT THE OPTION OF THE PROPERTY OWNER.

	<b>WATER DEPARTMENT</b>
	CITY OF SANTA CRUZ, CALIFORNIA
	<b>DETAIL 8</b>
	<b>2-INCH AND SMALLER BACKFLOW PREVENTION ASSEMBLY INSTALLATION</b>
NOT TO SCALE	
APPROVED 	RCE 37391

DRAWING No. 3716 A REVISED DECEMBER 2009  
\\fishare3\wt\WTE\Standard Specifications & Details\Water Standard Details\2024 Revisions\2024\_StdDtl\_Revisions\_recover.dwg



ELEVATION VIEW

## NOTES

1. REFER TO PROJECT CIVIL PLAN FOR REQUIRED BACKFLOW DEVICE OR CALL SCWD AT (831) 420-5210 PRIOR TO INSTALLATION.
2. BACKFLOW DEVICE MUST BE INSTALLED SO THAT IT IS READILY ACCESSIBLE FOR TESTING AND MAINTENANCE. LOCATIONS MUST BE APPROVED BY SCWD PRIOR TO INSTALLATION.
3. PAINT ALL EXPOSED PIPE, FITTINGS AND ASSEMBLY WITH 2-COATS OF RUST PREVENTATIVE ENAMEL (COLOR RED).



WATER DEPARTMENT  
CITY OF SANTA CRUZ, CALIFORNIA

## DETAIL 9A

VERTICAL 2-INCH AND SMALLER FIRE  
SERVICE BACKFLOW DEVICE INSTALLATION

NOT TO SCALE

APPROVED

*Andres Rivera*

RCE c72965



## Water Department

### APPROVED NO-LEAD DOUBLE-CHECK BACKFLOW DEVICES

COMPANY	MODEL	SIZE (INCHES)	
		1	2
AMES	LF2000BM1	VU/H	VU/H
APOLLO/CONBRACO	DCLF4A	VU/H	VU/H
BEECO	FDC	VU/H	VU/H
FEBCO	LF850	VU/H	VU/H
WATTS	LF007M1QT	VU/H	VU/H
	LF719QT	VU/H	VU/H
WILKINS	350XL	VU/H	VU/H
	950XL3	VU/H	VU/H

VU/H signifies that these models are USC approved double-check backflow devices for both vertical up and horizontal installations.

