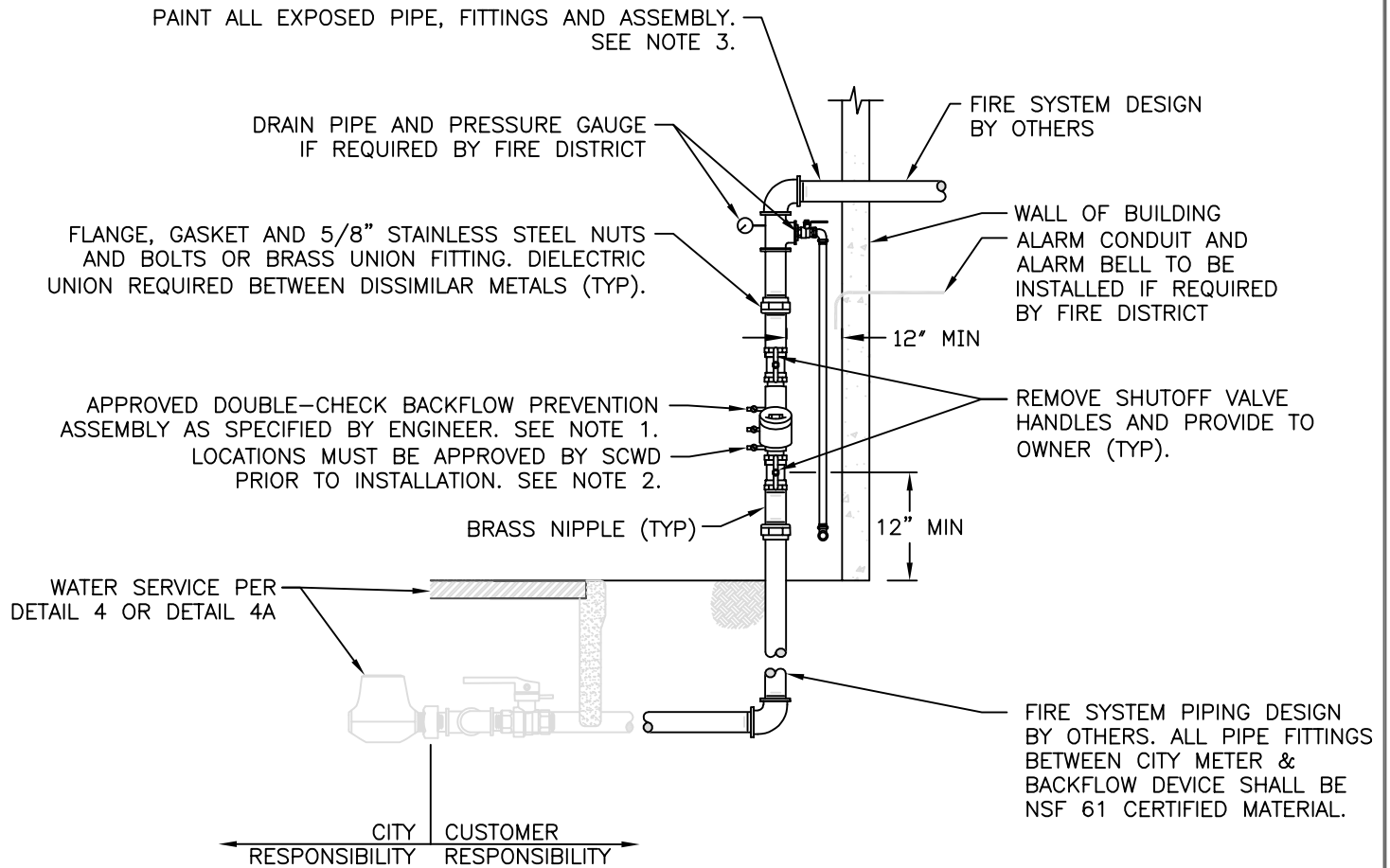



DRAWING No. 3716 A REVISED DECEMBER 2009 \\fishare3\wt\WTE\Standard Specifications & Details\Water Standard Details\2024 Revisions\2024_StdDtl_Revisions_recover.dwg



ELEVATION VIEW

NOTES

1. REFER TO PROJECT CIVIL PLAN FOR REQUIRED BACKFLOW DEVICE OR CALL SCWD AT (831) 420-5210 PRIOR TO INSTALLATION.
2. BACKFLOW DEVICE MUST BE INSTALLED SO THAT IT IS READILY ACCESSIBLE FOR TESTING AND MAINTENANCE. LOCATIONS MUST BE APPROVED BY SCWD PRIOR TO INSTALLATION.
3. PAINT ALL EXPOSED PIPE, FITTINGS AND ASSEMBLY WITH 2-COATS OF RUST PREVENTATIVE ENAMEL (COLOR RED).

	<p>WATER DEPARTMENT CITY OF SANTA CRUZ, CALIFORNIA</p>
	<p>DETAIL 9A VERTICAL 2-INCH AND SMALLER FIRE SERVICE BACKFLOW DEVICE INSTALLATION</p>
<p>NOT TO SCALE</p>	
<p>APPROVED <i>Leandro Rivera</i></p>	<p>RCE c72965</p>