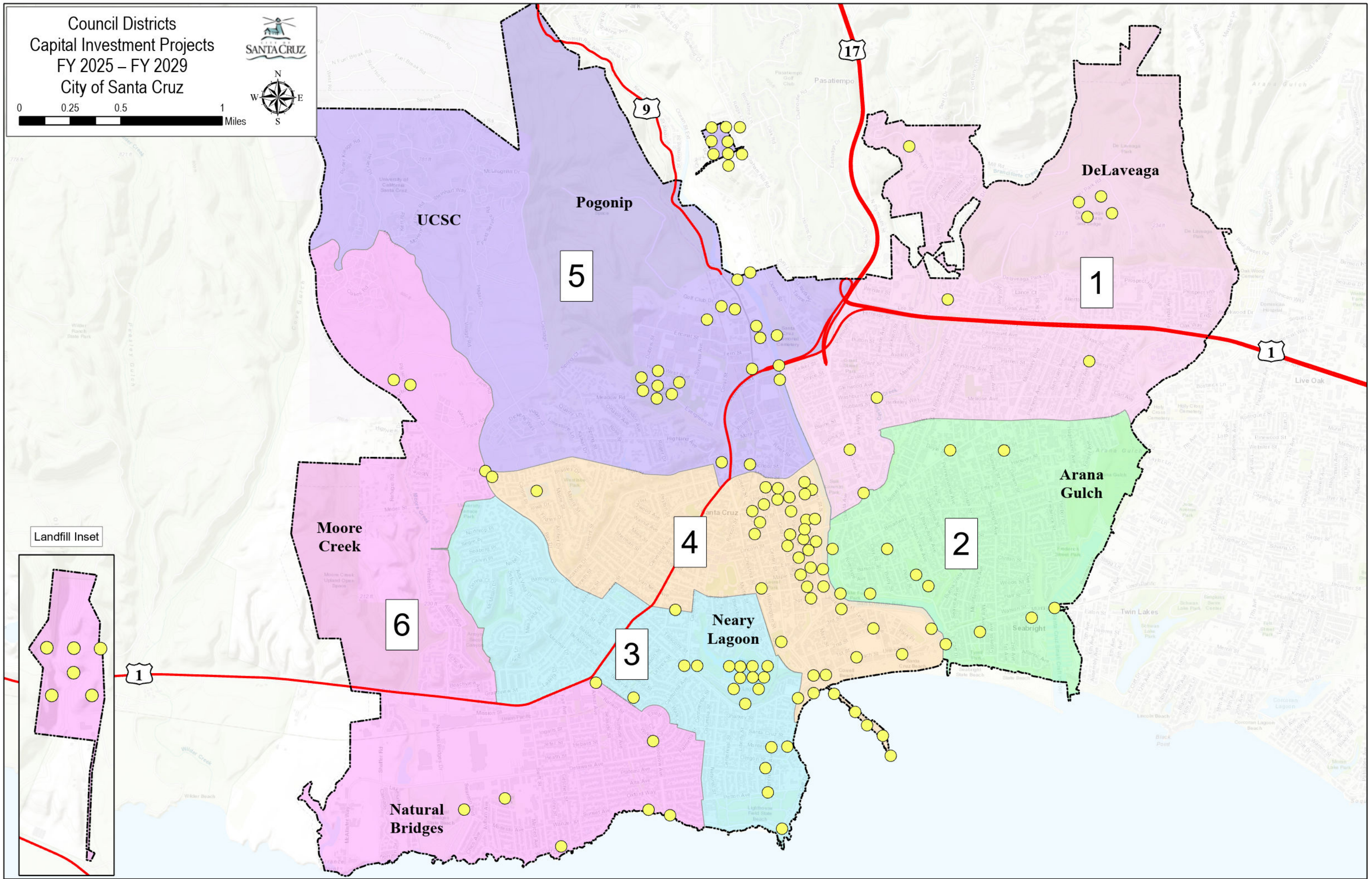
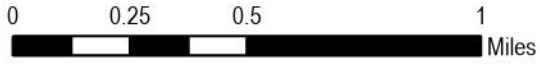
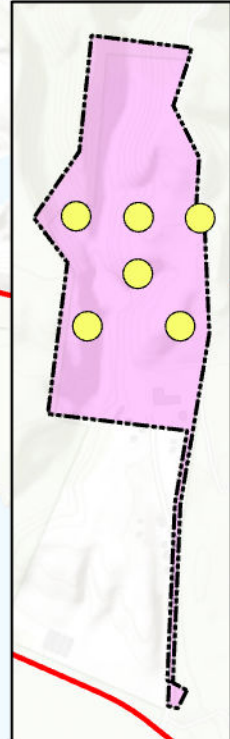


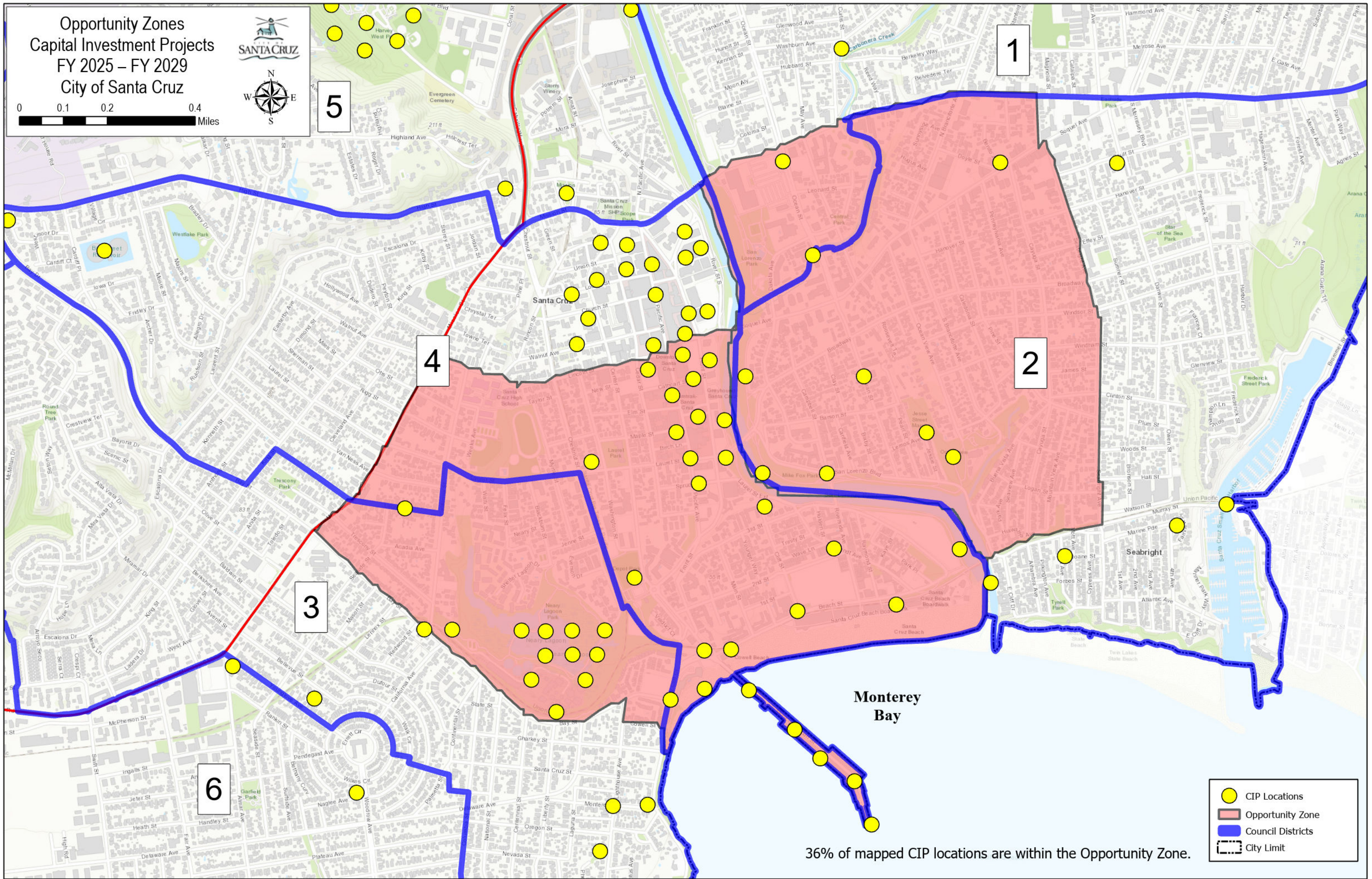
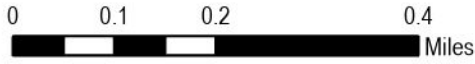
Council Districts
Capital Investment Projects
FY 2025 – FY 2029
City of Santa Cruz



Landfill Inset

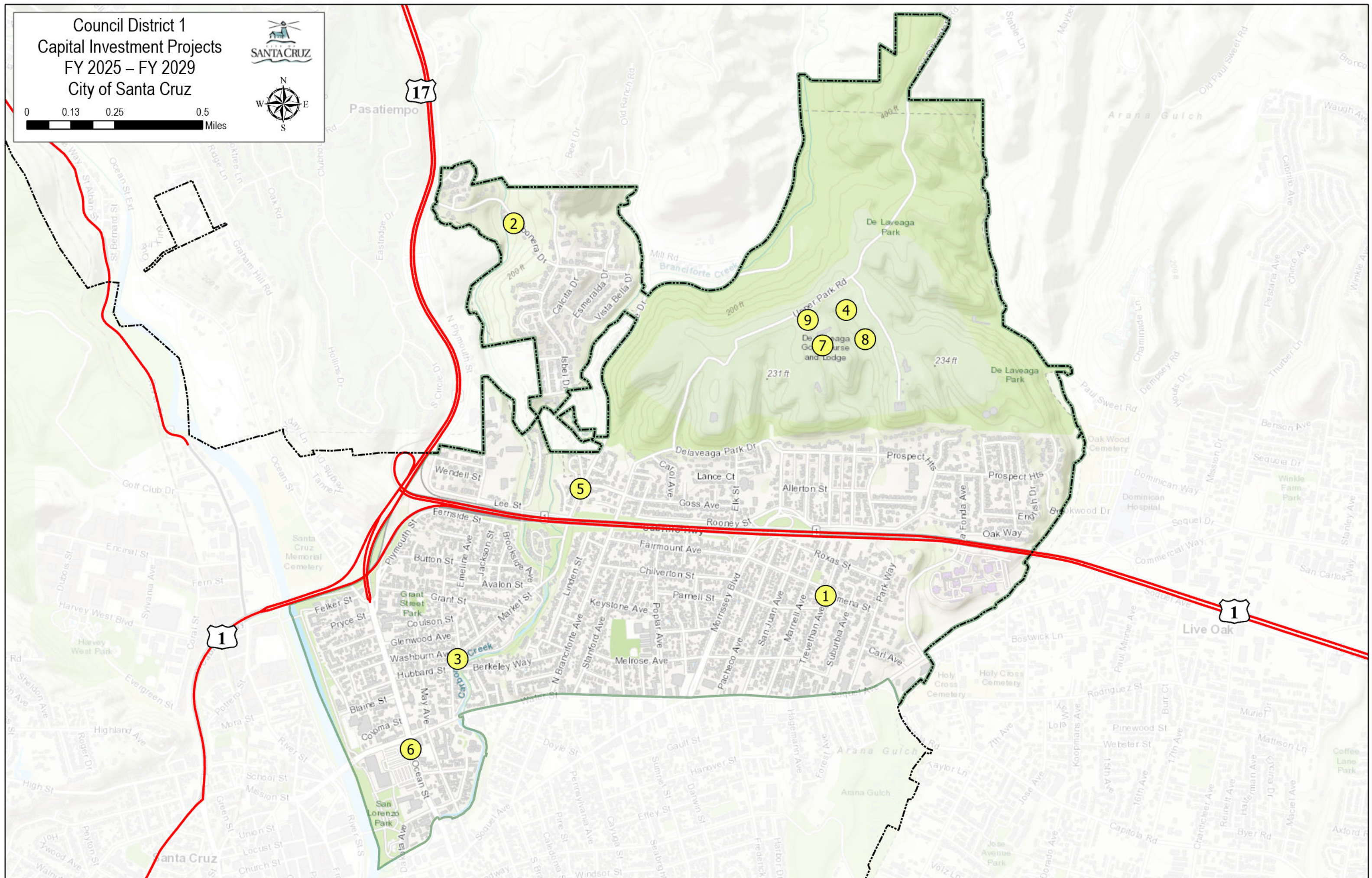
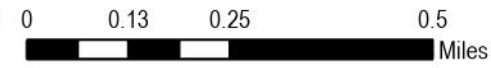


Opportunity Zones
Capital Investment Projects
FY 2025 – FY 2029
City of Santa Cruz



- CIP Locations
- Opportunity Zone
- Council Districts
- City Limit

36% of mapped CIP locations are within the Opportunity Zone.

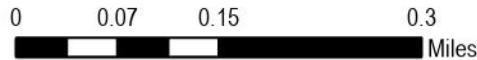


District 1

Map #	Project Name	Department	Project #
1	Trevethan Ave Sewer	Public Works	c401810
2	Isbel Pump Station Replacement	Public Works	c402105
3	Senior Center Rehab	Parks & Rec	c302101
4	Driving Range Improvements	Parks & Rec	c302213
5	Branciforte Drive Retaining Wall Project	Public Works	c402211
6	Ocean/Water Intersection Imp	Public Works	c401410
7	DeLaveaga Park-Culvert Repair, Slope Stabilization, Drainage, and Stormwater Runoff	Parks & Rec	c302402
8	DeLaveaga Golf Course Building Remodel	Parks & Rec	c301801
9	Golf Course Parking Lot Lighting Upgrades	Parks & Rec	c302509



Council District 2
Capital Investment Projects
FY 2025 – FY 2029
City of Santa Cruz

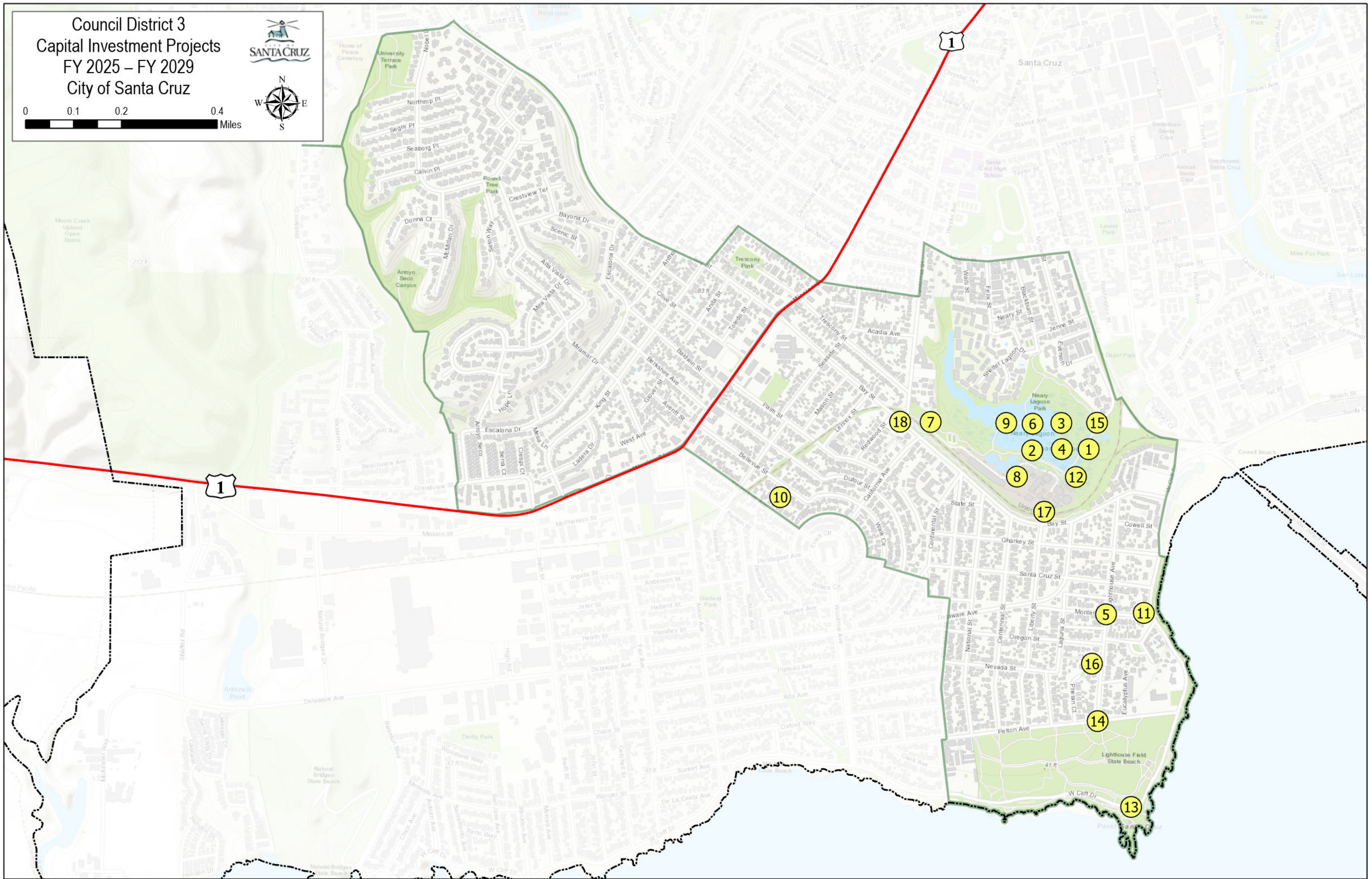


District 2

Map #	Project Name	Department	Project #
1	Jesse Street Marsh	Public Works	c409669
2	SLR Flood Control Environ Rest Project	Public Works	c409512
3	SLR Mouth & Lagoon Mgmt Plan Devel.	Public Works	c601403
4	Murray St Bridge Retrofit	Public Works	c409321
5	SL River Sanitary Sewer Siphon	Public Works	c401315
6	MB Sanctuary Scenic Trail (Rail Trail) - Segments 8 & 9	Public Works	c401804
7	Branciforte Measure S Facility Remodel	Public Works	c351801
8	Branciforte Creek Channel Repair and Maintenance	Public Works	c401313
9	Ocean Street Beautification	Non-Departmental	c512001
10	Ocean View Park Redesign	Park	c302236
11	Sewer Realignment Project	Public Works	c402203
12	Fire Station 2 Rear Expansion	Fire	c212302
13	FEMA Levee Certification	Public Works	c402112



Council District 3
Capital Investment Projects
FY 2025 – FY 2029
City of Santa Cruz



District 3

Map #	Project Name	Department	Project #
1	WWTF Infrastructure and Major Equipment Study	Public Works	c401706
2	WWTF Upgrade Digester Equipment	Public Works	c401607
3	WWTF Master Planning	Public Works	c402504
4	WWTF Laboratory Modernization	Public Works	c401608
5	Monterey St and Lighthouse Ave Sewer	Public Works	c401907
6	WWTF Water Piping Rehab	Public Works	c401407
7	Nearby Lagoon Park Rehab/Restoration	Public Works	m409668
8	WWTF Equipment Replacement	Public Works	m409659
9	WWTF Electrical System	Public Works	c401405
10	MB Sanctuary Scenic Trail (Rail Trail) - Segment 7	Public Works	c401413
11	West Cliff Stair Repair	Public Works	m401402
12	City Headworks Replacement	Public Works	c402204
13	West Cliff Resiliency and Accessibility	Public Works	c4023505
14	Pelton Ave Pump Station Generator	Public Works	c402104
15	Nearby Lagoon Park Rehab-Maint. (Annual)	Public Works	m409668
16	Lighthouse Ave Park Fencing	Parks & Rec	c302408
17	WWTF Odor Control Improvement Project	Public Works	c402505
18	Bay and California Intersection Improvements	Public Works	c402209



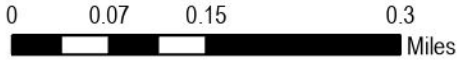


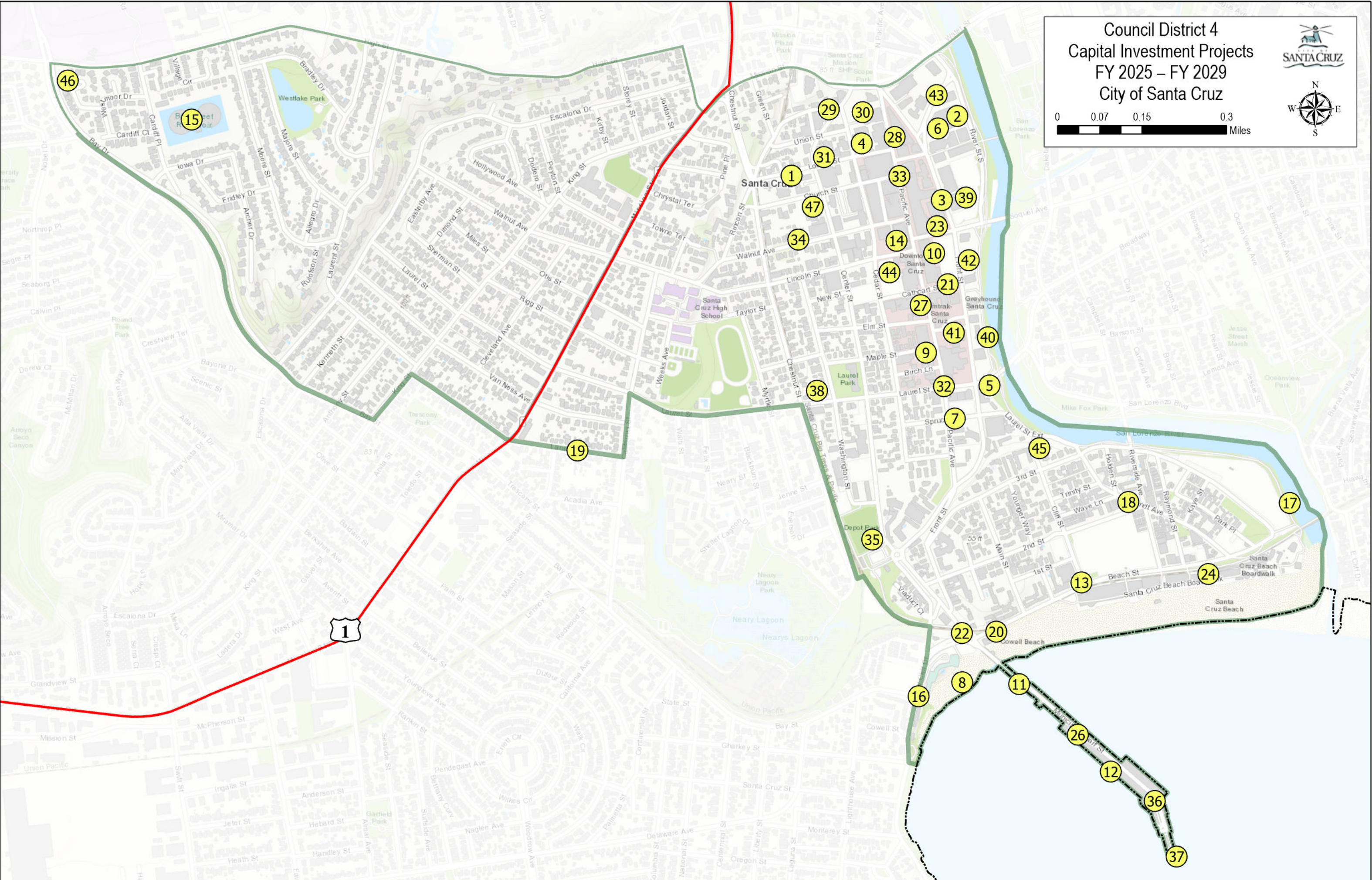
Council District 4

Capital Investment Projects

FY 2025 – FY 2029

City of Santa Cruz



District 4

Map #	Project Name	Department	Project #
1	Solar One PPA Buyout	Public Works	c402511
2	Parking Equipment Replacement - River Front Garage	Public Works	c401703
3	Parking Equipment Replacement - Soquel/ Front Garage	Public Works	c401704
4	Parking Equipment Replacement - Locust Garage	Public Works	c401705
5	Downtown SLR Drainage System Assessment	Public Works	c401707
6	River-Front Garage Elevator	Public Works	c401509
7	Front-Spruce-Pacific-Sewer Main Rehab	Public Works	c401606
8	Cowell Beach Water Quality Project	Public Works	c401614
9	Downtown Bike Locker Replacement Program	Public Works	c401812
10	Trolley Acquisition	Economic Development	c511704
11	Wharf Rehabilitation Projects	Economic Development	c511502
12	Dolphin Decommissioning Plans	Economic Development	c512401
13	Citywide Sign Program Phase II	Economic Development	r521205
14	Downtown Alley Improvements	Economic Development	c511703
15	Maintenance Workshop at BSR	Water	c702502
16	Bay - West Cliff Intersection Improvements	Public Works	c401905
17	SLR Mouth & Lagoon Mgmt Plan Devel.	Public Works	c601403
18	Riverside Ave Underground Utility	Public Works	c401208
19	Laurent St Sewer	Public Works	c401809
20	Beach Street Restrooms	Parks & Rec	c301913
21	Farmers Market Structure	Economic Development	c511901
22	Pacific Beach Roundabout Enhancements	Public Works	c402507
23	Elevator Controls Upgrade	Non-Departmental	c402004
24	Beach/Cliff Traffic Signal	Public Works	c401303
25	Space Utilization Design for City Hall	Non-Departmental	c101701
26	Miramar Demolition and Wharf Piling Replacement	Economic Development	c511705
27	Downtown Intersection Improvements	Public Works	c401903
28	Downtown Parking Garages Signs and Paint Upgrade	Public Works	c402107
29	Union/Locust Building Generator	Water	c702107
30	Locust Garage Improvements	Public Works	c402106
31	ASR - Mid County Existing Infrastructure	Water	c702101
32	Pacific Avenue Beautification	Non-Departmental	c512101

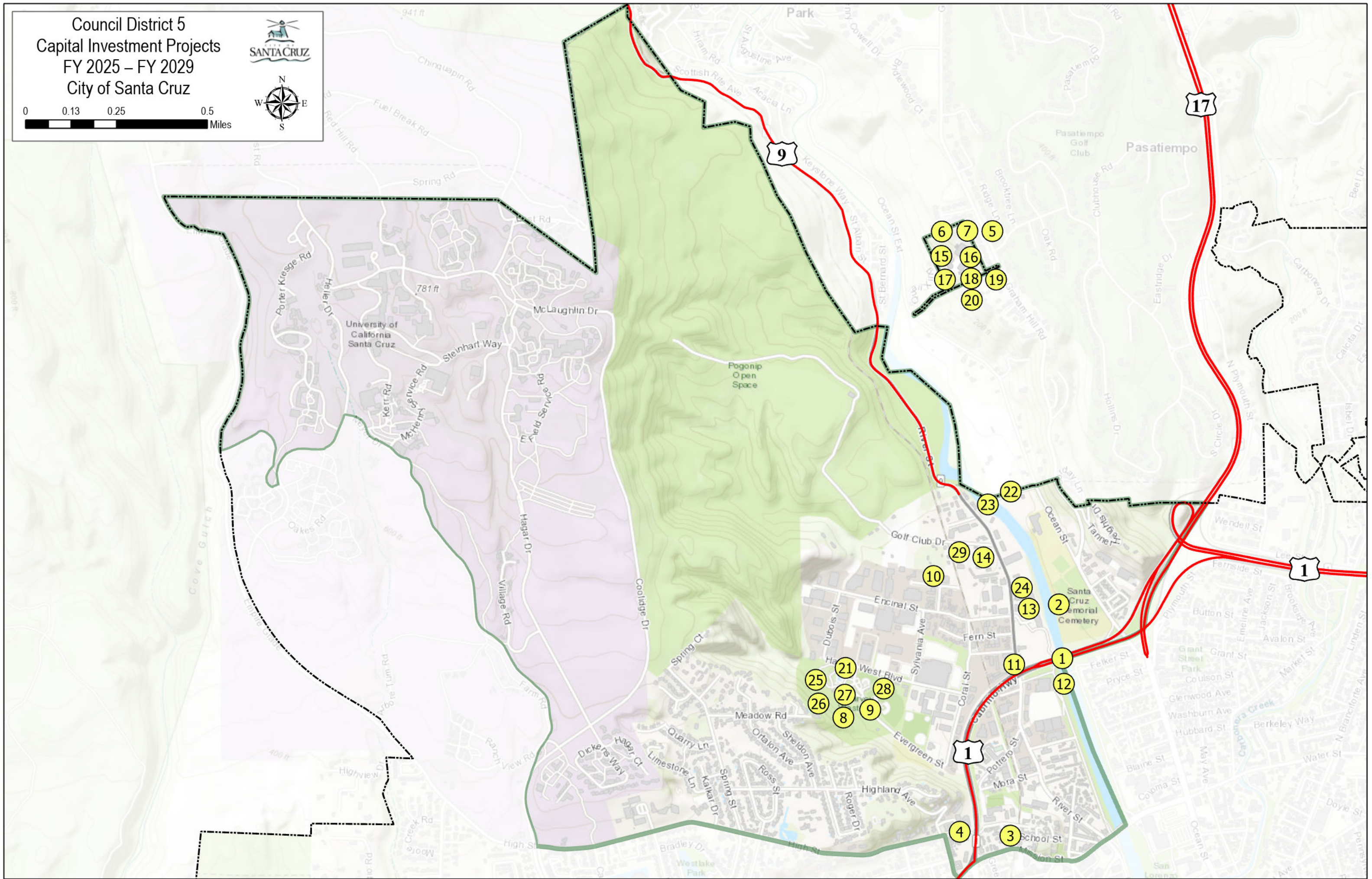
Map #	Project Name	Department	Project #
District 4 (continued):			
33	Downtown Library Affordable Housing Project	Non-Departmental	c512002
34	Rescue Unit	Fire	c212203
35	Depot Park- Landscaping and Fencing Repairs	Parks & Rec	c302506
36	Facility Improvements	Parks & Rec	c302214
37	Storm Damage Repairs at End of Wharf	Parks & Rec	c302510
38	London Nelson Community Center - Senior Studio Improvements	Parks & Rec	c302241
39	Electric Vehicle Charging Station Expansion in Public City Parking Lots	Public Works	c402214
40	Pacific Station South	Non-Departmental	c512202
41	Pacific Station North	Non-Departmental	c512201
42	Electric Vehicle Charging Station Expansion in Public City Parking Lots	Public Works	c402214
43	Electric Vehicle Charging Station Expansion in Public City Parking Lots	Public Works	c402214
44	Electric Vehicle Charging Station Expansion in Public City Parking Lots	Public Works	c402214
45	FEMA Levee Certification	Public Works	c402112
46	Bay Drive Protected Bike Lanes and Pedestrian Path	Public Works	c402304
47	Civic Access and Safety Improvements	Parks & Rec	c302401



Council District 5
Capital Investment Projects
FY 2025 – FY 2029
City of Santa Cruz



0 0.13 0.25 0.5
Miles

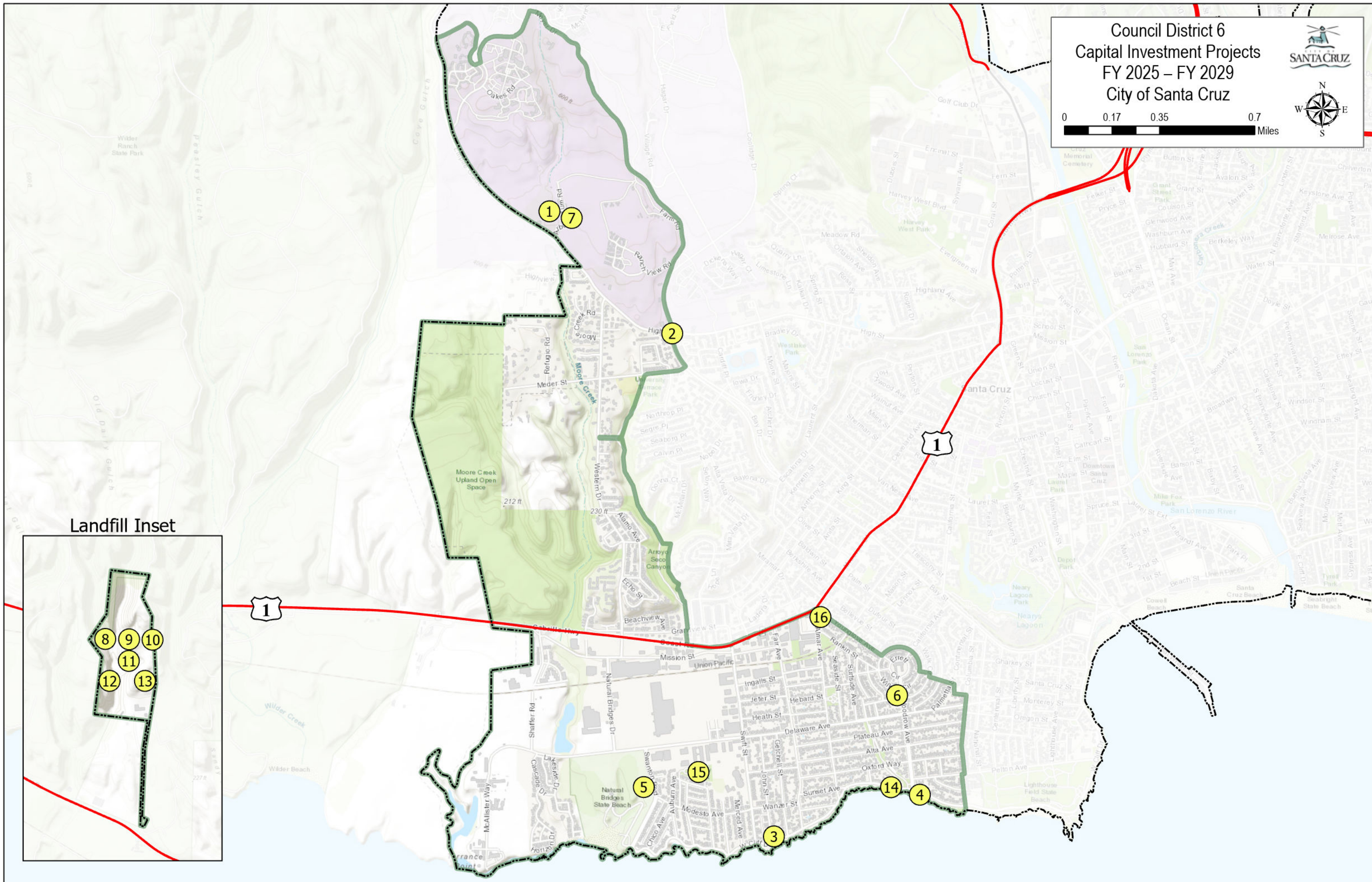
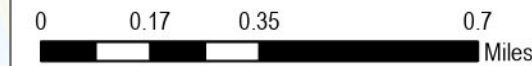


District 5

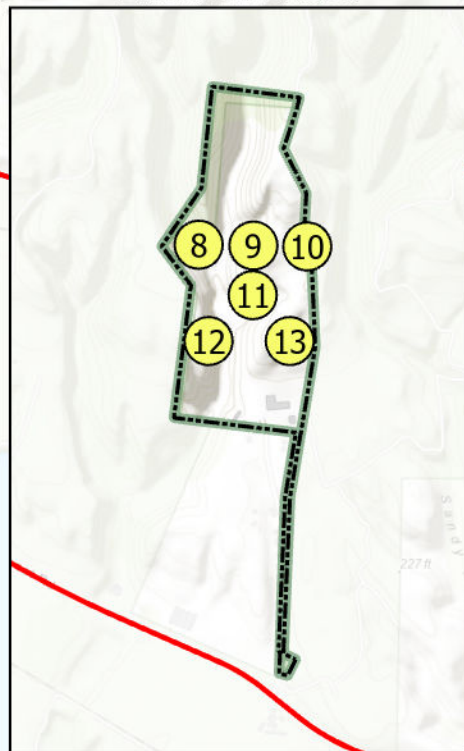
Map #	Project Name	Department	Project #
1	Route 1 Bridge Replacement	Public Works	c401402
2	SLR Mouth & Lagoon Mgmt Plan Devel.	Public Works	c601403
3	Mission Street Hill Utility Undergrounding	Public Works	c401004
4	High Street Sewer Upsizing- Phase I	Public Works	c402502
5	Aquifer Storage and Recovery	Water	c701609
6	WTP Concrete Tank Assessment and Rehabilitation	Water	c701501
7	GHWTP CC Tanks Replacement	Water	c701501
8	Harvey West Ballfield Lighting	Parks & Rec	c302218
9	Harvey West Park Infrastructure Improvements	Parks & Rec	c302238
10	Corp Yard Stormwater Pollution Prevention Plan and Implementation	Non-Departmental	c601701
11	Route 1/9 Imp	Public Works	c400805
12	SLR Mouth & Lagoon Mgmt Plan Devel.	Public Works	c601403
13	Tannery Landscaping	Economic Development	c511706
14	Solar PV Expansion at Corp Yard	Public Works	c101901
15	Felton Diversion Pump Station Assessment	Water	c701906
16	Recycled Water Feasibility Study	Water	c701611
17	GHWTP Gate Entrance Upgrades	Water	c702109
18	Newell Creek Pipeline Felton/Graham Hill WTP	Water	c702105
19	GHWTP Facilities Improvement Project	Water	c700025
20	GHWTP SCADA Radio System Replacement	Water	c702201
21	Harvey West Park- Ballfield Sand and Irrigation	Park	c302507
22	Tait Diversion Rehab/Replacement	Water	c701903
23	Tait Wells Rehabilitation	Water	c702501
24	Tannery Dance & Performane Building	Economic Development	c512204
25	Redesign Harvey West Park	Parks & Rec	c302404
26	Harvey West Park-Clubhouse Picnic Area Fence	Parks & Rec	c302405
27	Harvey West Park-Resurfacing Friendship Gardens and Upper Glen Group Picnic Areas	Parks & Rec	c302406
28	HW Pool-Repairs and Upgrades	Parks & Rec	c302313
29	Corp Yard Site Security Upgrades	Public Works	c402402



Council District 6
Capital Investment Projects
FY 2025 – FY 2029
City of Santa Cruz



Landfill Inset



District 6

Map #	Project Name	Department	Project #
1	Recoat University Reservoir No. 4	Water	c701505
2	Bay/High Intersection	Public Works	c401103
3	West Cliff Drive Multi-use Maintenance	Public Works	m400819
4	West Cliff Drive Revetment Repair	Public Works	c401501
5	Swanton Blvd Multi-use Trail Connector	Public Works	c401805
6	Garfield Park Measure S Facility Remodel	Public Works	c351802
7	University Tank No. 4 Rehab/Replacement	Water	c701505
8	Gas Probe Remediation	Public Works	c401908
9	Landfill Master Plan Development	Public Works	c401909
10	Dimeo Lane Paving and Storm Drain	Public Works	c401312
11	Recycling Center Storm Water Quality Improvements	Public Works	c402111
12	Resource Recovery Facility Enclosed Flare Installation	Public Works	c402512
13	RRF Household Hazardous Waste Facility Improvement Project	Public Works	c402202
14	West Cliff Resiliency and Accessibility	Public Works	c402305
15	Sgt. Derby Entrance Improvements	Parks & Rec	c302513
16	Generator for Fire Station #3	Fire	c212303



Unmapped

Project Name	Department	Project #
Aerators at Loch Lomond	Water	c701706
Advance Dilemma Zone Detection and Retroreflective Signal Back Plate Upgrades	Public Works	c402216
ASR - Mid County New Wells	Water	c702102
ASR - Santa Margarita Groundwater Basin	Water	c702103
ASR Planning	Water	c701609
Beltz 12 Ammonia Removal	Water	c702203
Beltz WTP Upgrades	Water	c702305
Brackney Landslide Area Pipeline Risk Reduction	Water	c702002
Branciforte Streambank Restoration	Water	c702304
Bridge Maintenance	Public Works	m401302
Catch Basin Replacement Program	Public Works	c401610
City Arterial and Collector Street Reconstruction and Overlay	Public Works	c400809
City Residential and Collector Street Reconstruction and Overlay	Public Works	c400810
Citywide Traffic Signal Controller Upgrade	Public Works	c401602
CMMS Software Replacement for Water Dept	Water	c702202
CMMS Upgrade	Public Works	c402205
CMP Storm Drain Pipe Replacement	Public Works	c401709
Distribution System Water Quality Improvements	Water	c702001
Escalona Avenue Storm Drain Pipe replacement	Public Works	c402302
Facility & Infrastructure Improvements	Water	c701907
FEMA Levee Certification	Public Works	c402112
Food Waste Pre-processing System Improvement Project	Public Works	c402401
GHWTP SCADA Radio System Replacement	Water	c702201
Homeless Infrastructure Projects	Public Works	c102101
Information Technology Applications	Information Technology	c152002
Information Technology Infrastructure	Information Technology	c152001
Intertie 1-Santa Cruz-Scotts Valley	Water	c702205
Laguna Creek Diversion Retrofit	Water	c701801
Main Replacements- Distribution Section	Water	c701507
Main Replacements- Engineering Section	Water	c700002
Meter Replacement Project	Water	c701603
NCD I/O Replacement Project	Water	c701606
Parks Facilities Security Improvements	Parks & Rec	c302420
Paving Box & Tack Tank Purchase	Public Works	c402514
Public Facilities - Maintenance/CEC Energy Saving Projects	Public Works	m609195
Recreational Vehicle Sanitary Disposal Station	Public Works	c402508
River Bank Filtration	Public Works	c701806
Santa Cruz Regional Fire Training Center	Fire	c212402
Security Camera & Building Access Upgrades	Water	c701704
Sewer System Improvements	Public Works	c401511
Sidewalk/Access Ramp	Public Works	c409452

Project Name	Department	Project #
Unmapped (continued):		
Storm Water Trash Capture Program	Public Works	c402401
Studies, Designs, and Construction Drawings for Park Projects	Public Works	c402302
Traffic Calming Program (Annual)	Water	c702304
Type 6 Fire Truck	Water	c702002
Unsignalized Crossing Improvement Project	Water	c702203
Water Conservation & Irrigation System	Water	c702203
Water Conservation and Irrigation System Improvements	Water	c702102
Water Main Replacements -Outside Agency	Water	c700003
Water Program Administration	Water	c701901
Water Program Management Reserve	Water	c702003
Water Supply Augmentation Strategy Implementation	Water	c701705

