

Westside Engagement

Monday, September 25th | Doors open at 4:45pm, Event: 5pm-6pm

Presentations from:



Project updates from the
Public Works team!

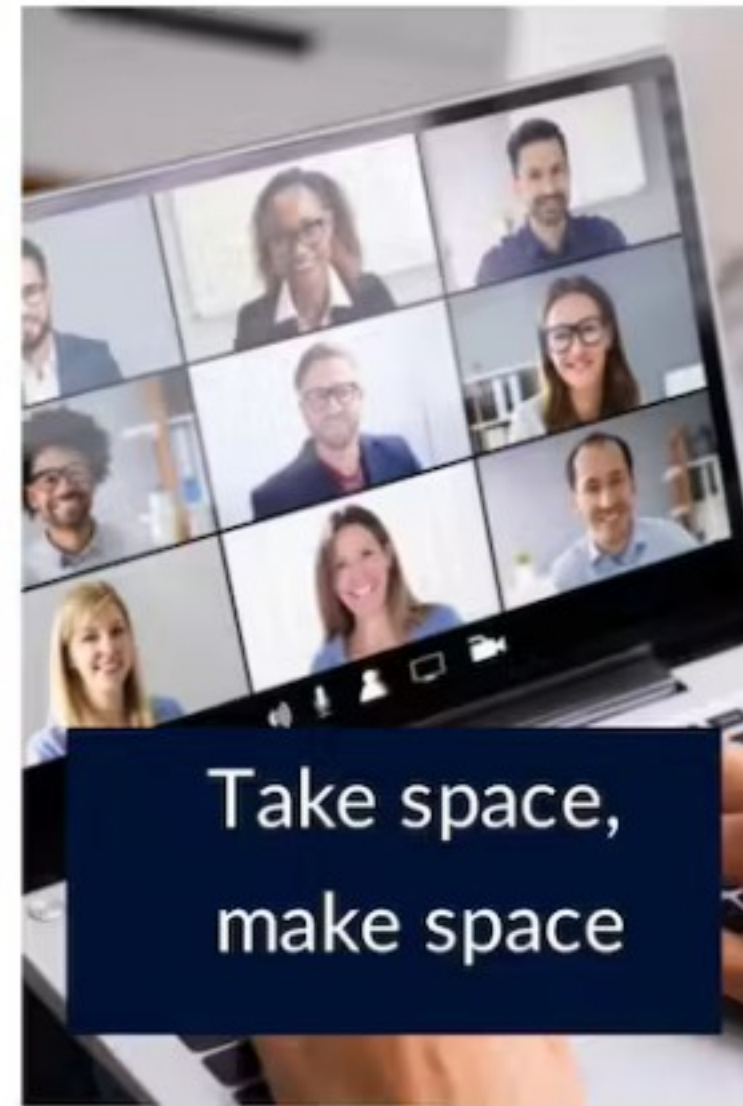


3-year Homelessness
Response Plan update!

Interpretation available



Webinar Etiquette



Instructions

What is your favorite part about life in Westside Santa Cruz?

49 responses





Public Works



Nathan Nguyen, Director of Public Works

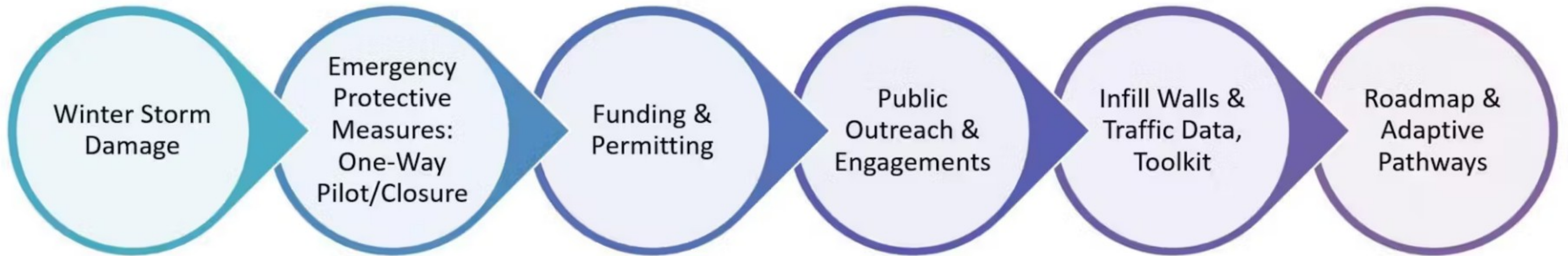
Agenda

- 1 West Cliff Update
- 2 Bay Street Corridor
- 3 Swanton-Delaware Multi-Use
Path

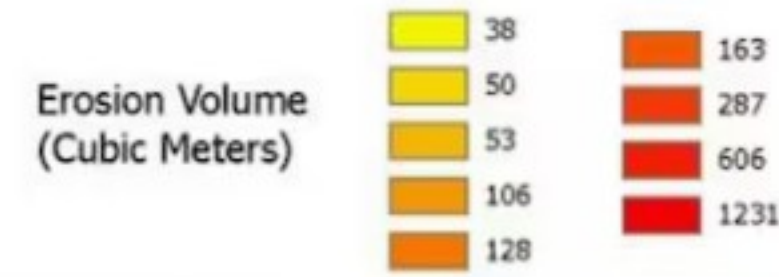


West Cliff Update

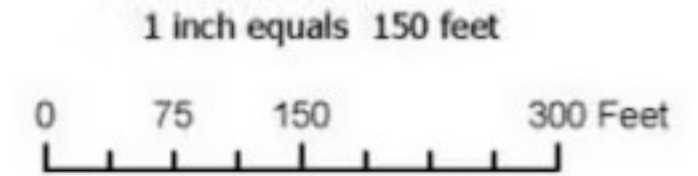
Overview: West Cliff in 2023



West Cliff Drive Erosion Volume Estimates



Data courtesy of USGS. Erosion data is an estimate.



1030 West Cliff Drive
Covered by FHWA

Site 007
Site Area (Sq Meters) = 66.4
Erosion Volume (Cubic Meters) = 50
Fill Volume (Tons) = 87

Site 005
Site Area (Sq Meters) = 267.1
Erosion Volume (Cubic Meters) = 106
Fill Volume (Tons) = 185

Spring-'24

Site 008
Site Area (Sq Meters) = 437.2
Erosion Volume (Cubic Meters) = 53
Fill Volume (Tons) = 92

Site 006
Site Area (Sq Meters) = 597
Erosion Volume (Cubic Meters) = 606
Fill Volume (Tons) = 1060

Site 004b
Site Area (Sq Meters) = 303.6
Erosion Volume (Cubic Meters) = 38
Fill Volume (Tons) = 66

Site 004
Site Area (Sq Meters) = 769
Erosion Volume (Cubic Meters) = 163
Fill Volume (Tons) = 286

Site 003
Fill Volume
Approx. 1,200 Tons

Site 001
Site Area (Sq Meters) = 495.7
Erosion Volume (Cubic Meters) = 128
Fill Volume (Tons) = 224

1016 West Cliff Drive
Covered by FHWA



920 West Cliff Drive
Covered by FHWA



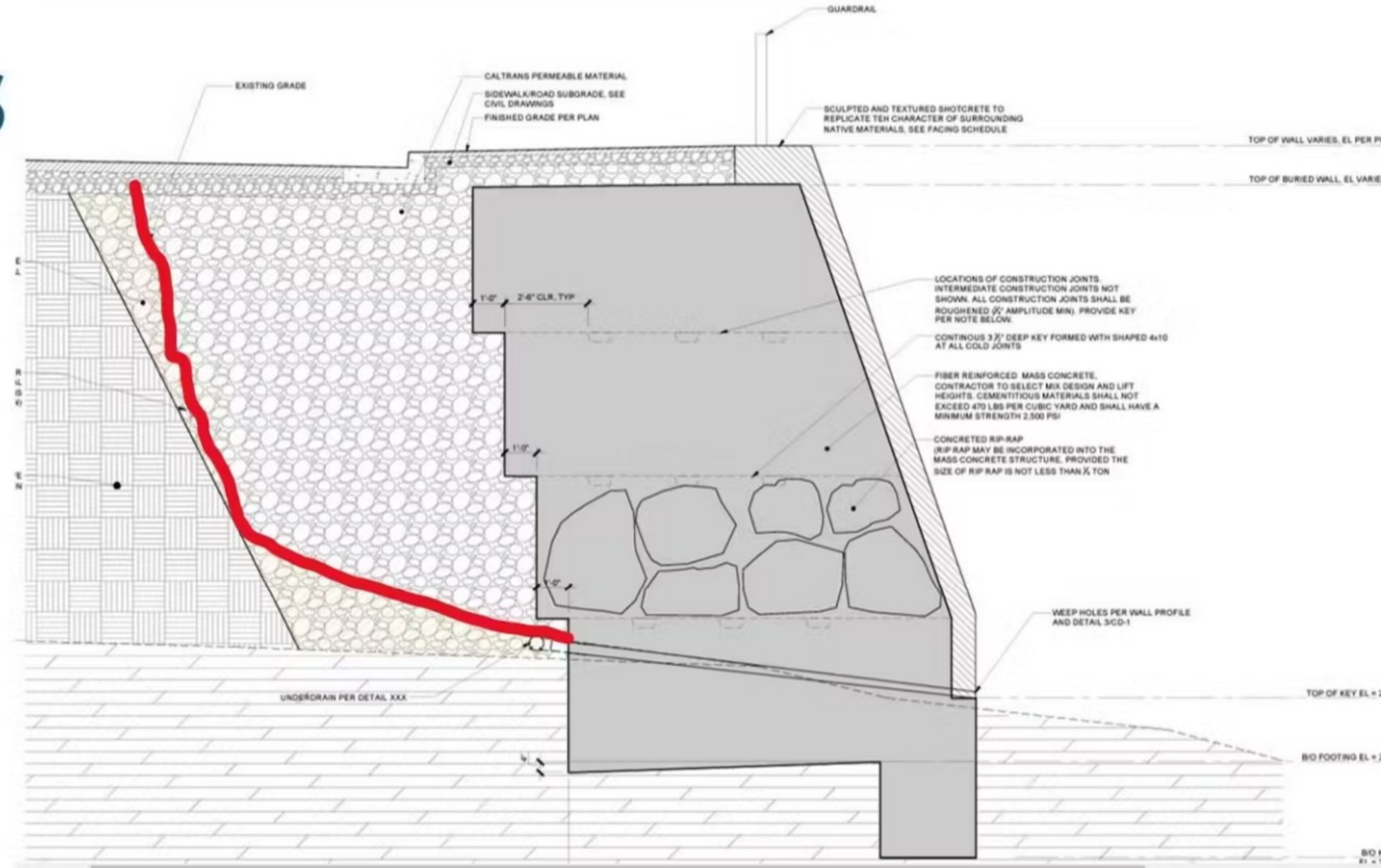
Site 002
Fill Volume
Approx. 150 Tons

932 West Cliff Drive
Covered by FHWA



Note: Anticipated funding coverage by FHWA are in blue note boxes; FEMA in white note boxes.

Infill Walls



Ongoing Communications

- Door Hangars
- Mailers
- Press Release
- Newsletter Updates
- Regular Website Updates and Social Media Posts

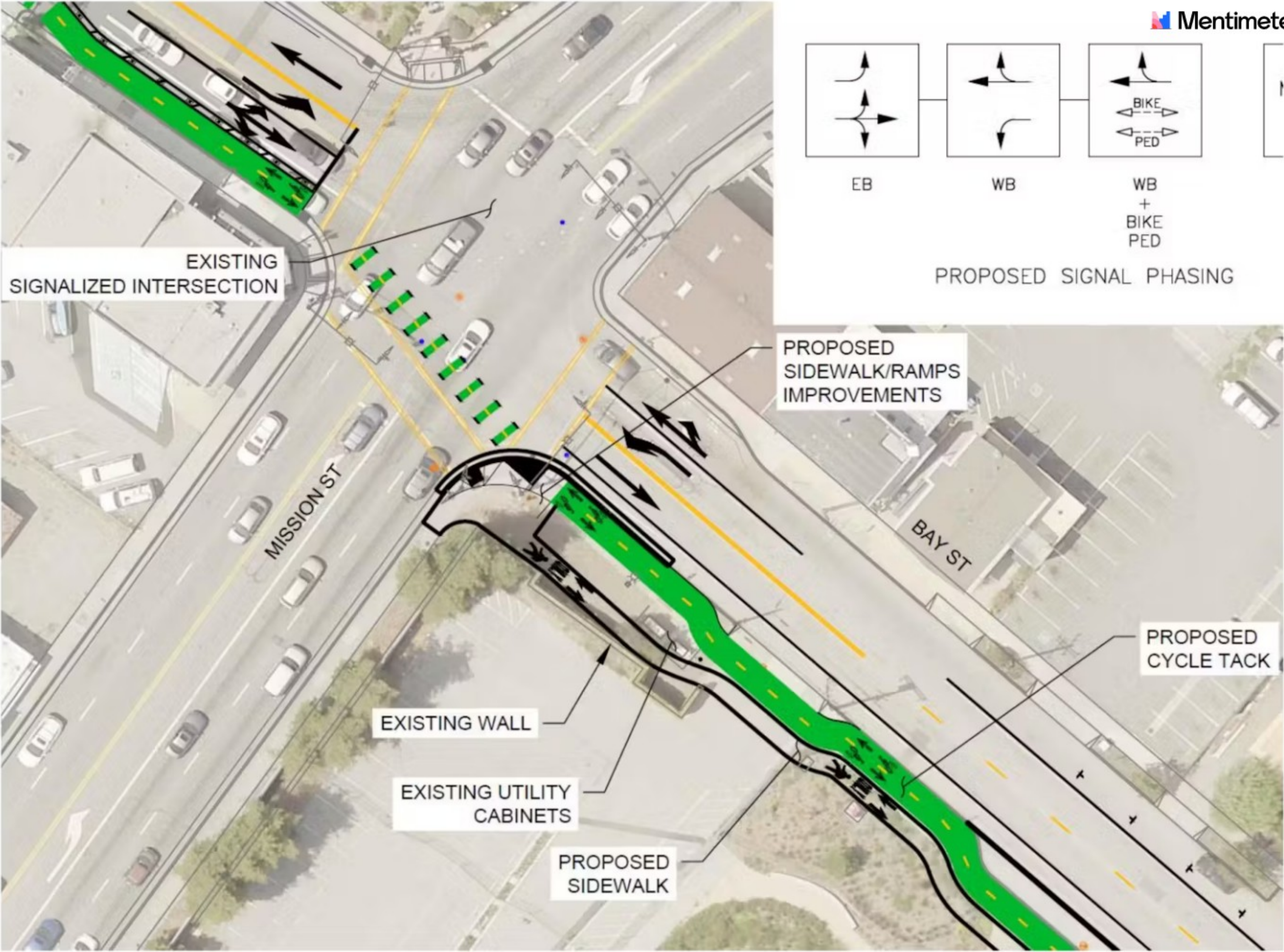


<https://www.cityofsantacruz.com/government/city-departments/public-works/traffic-engineering/west-cliff-storm-damage-and-temporary-traffic-controls>

Bay Street Corridor

- Improve Connections
 - West Cliff Drive to UCSC, multi-use paths (i.e. Rail Trail), parks and open space, schools (Bay View Elementary), transit, housing
- Improve Intersections
 - Mission, King, Escalona
 - West Cliff, California, High (individual CIP projects)
- Secured Funding: \$3.8M (\$3.5M AHSC grant, \$300K TDA)
- Estimated Timeline:
 - Summer '24 - Paving California to Mission
 - Summer '26 - Bay/Mission, Caltrans Cap-M
 - Summer '26 – Other Corridor Improvements

Bay/ Mission

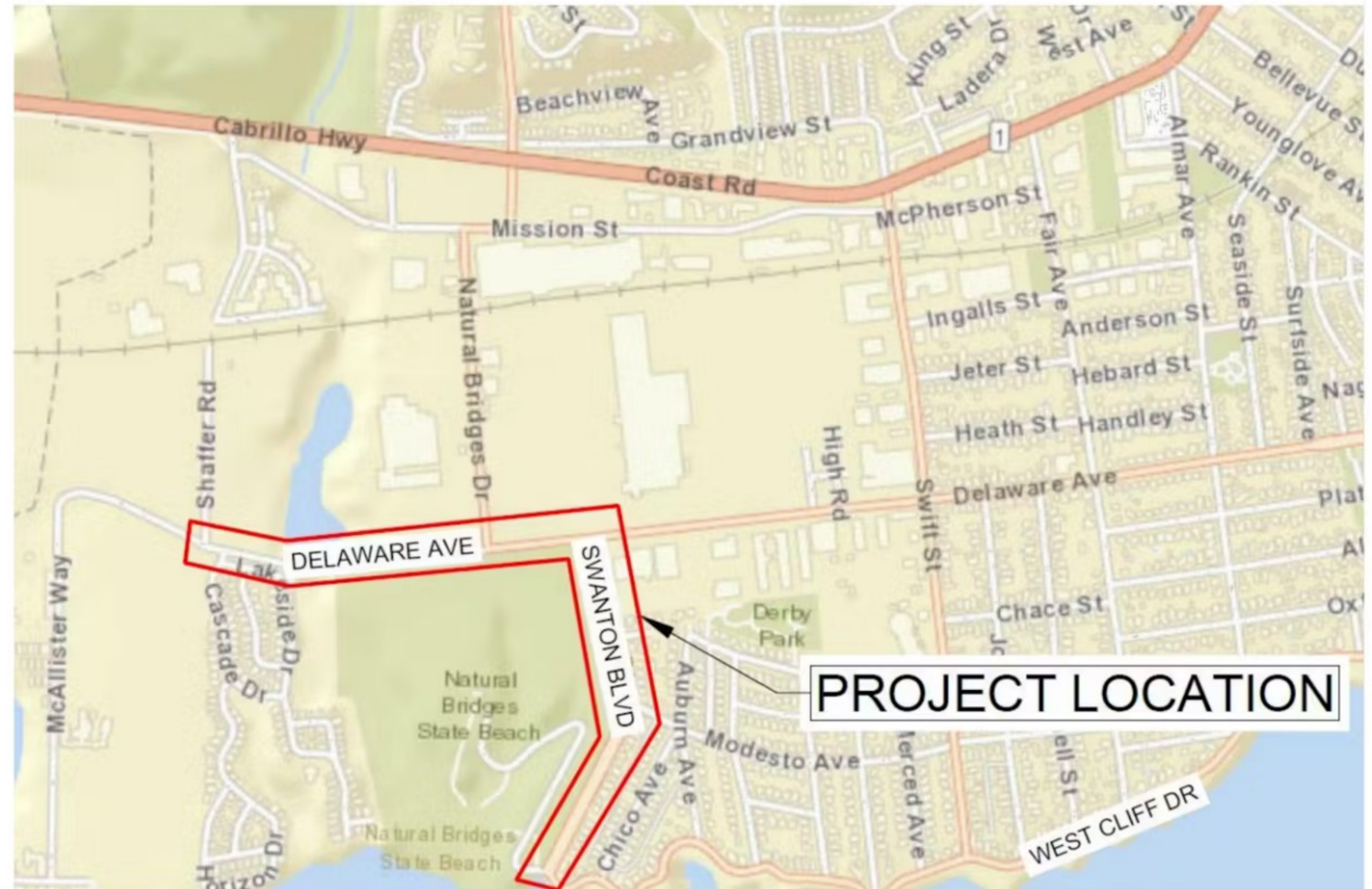


Swanton/Delaware Multi-Use Trail

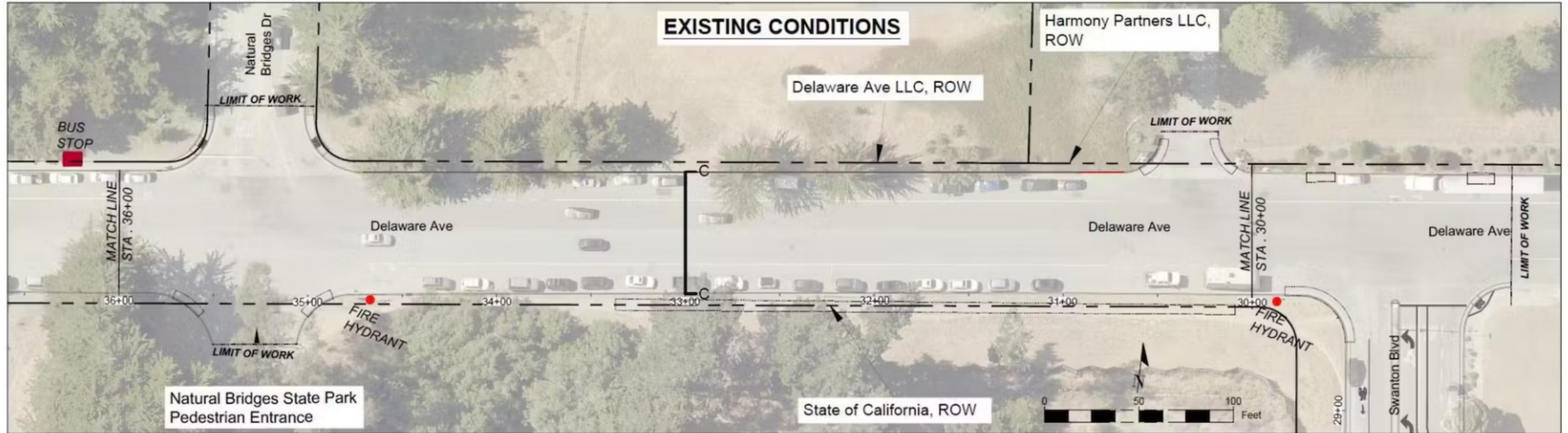
- **10-12 foot wide** multi-use trail along Swanton Blvd, from West Cliff to Delaware, and along Delaware to Natural Bridges Drive.
- Improved lighting, curb ramps, islands, signs and striping are proposed at the intersection. This project fills a missing gap between West Cliff Drive and Mission Street Extension, providing improved and safer access to many public, commercial and residential activity centers.
- This multi-use trail is adjacent to Natural Bridges State Park and State Parks is supportive of the project.
- In December 2022 this project was awarded **\$2.97 million** in Active Transportation Program grant funding through the California Transportation Commission.
- Estimated construction start date: **Summer 2026**



Swanton/ Delaware



Existing Conditions







OVO Update



Lee Butler, Director of Planning and
Community Development

Oversized Vehicles Ordinance

- Oversized vehicles
 - >20' long or
 - >8' tall and >7' wide
- No OV parking, 12:00 a.m. - 5:00 a.m.
 - Except by permit
- No unattached trailers, any time



cityofsantacruz.com/ovo

OV Permits

- Resident
 - Valid 1 year
 - 4 periods of 72 hours per month
- Out-of-town visitors
 - 72 hours
 - 6 per address per year
- Contractors
- Hotels



cityofsantacruz.com/ovo

Safe Parking Program

1. Emergency (3 spaces, overnight)
2. Basic (46+ spaces, extended overnight)
3. Robust (15-20 spaces, 24/7 + case management)



cityofsantacruz.com/ovo

Oversized Vehicle Ordinance (OVO)

Estimated Implementation
Timeline

Approvals from Coastal Commission

Revised findings hearing where details of the special conditions will be approved, including:

- Outreach plan.
- Operations and maintenance plan.
- Signage plan.
- Stakeholder Group membership and meeting plan.

1

Summer
2023

Fall
2023

2

Street Signs

- Manufacture and install street signs consistent with Coastal Commission approvals of the signage plan.

Outreach

- Implement pre-enforcement sections of the Outreach Plan, including citywide information to people owning oversized vehicles.

3

Fall
2023

Fall
2023

4

Permits

- Produce and sell permits to interested community members, hotels, contractors, etc.

Expected Launch and Enforcement

- Parking of oversized vehicles from midnight to 5am is prohibited except by permit.
- Other vehicle codes still apply in all areas.

5

Fall
2023



Homelessness Response Update



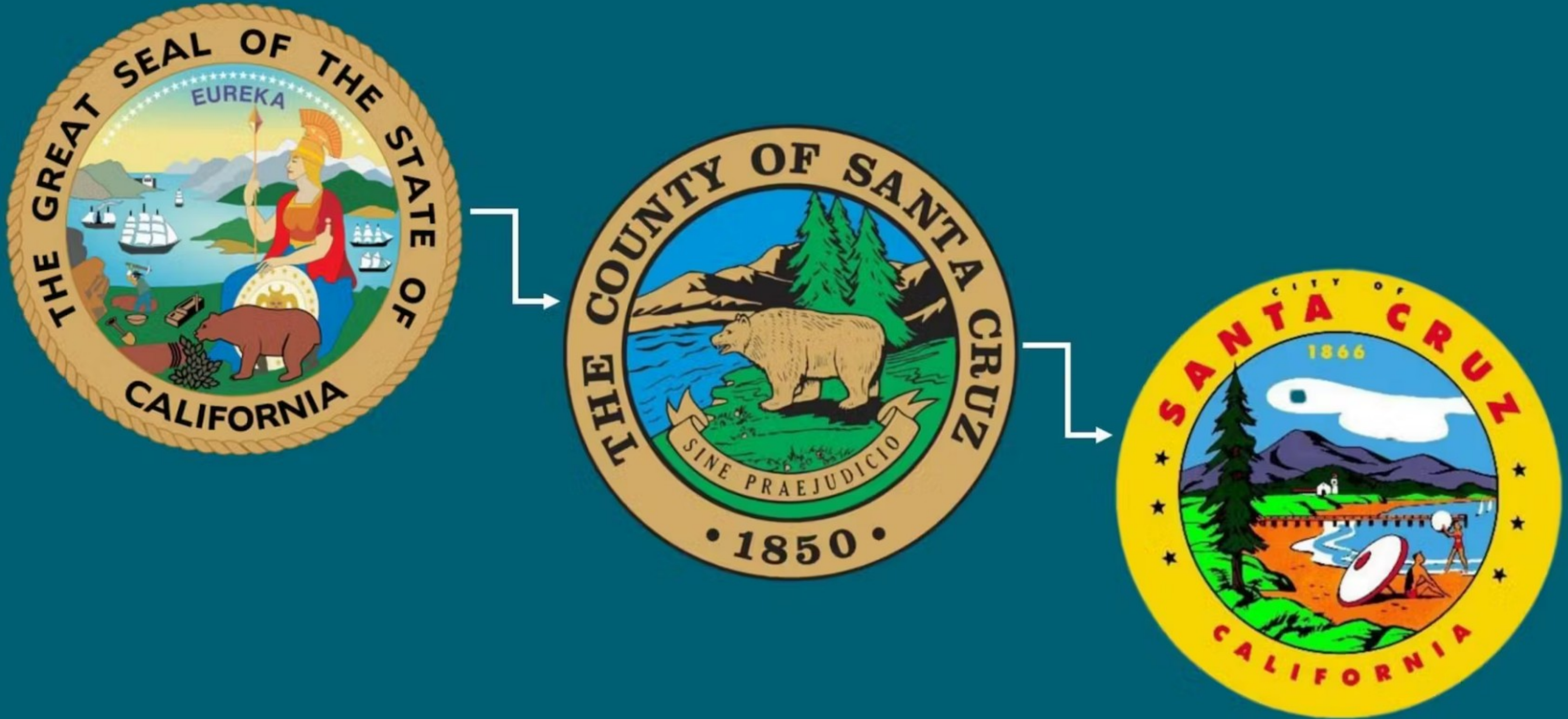
Lisa Murphy, Deputy City Manager

Agenda

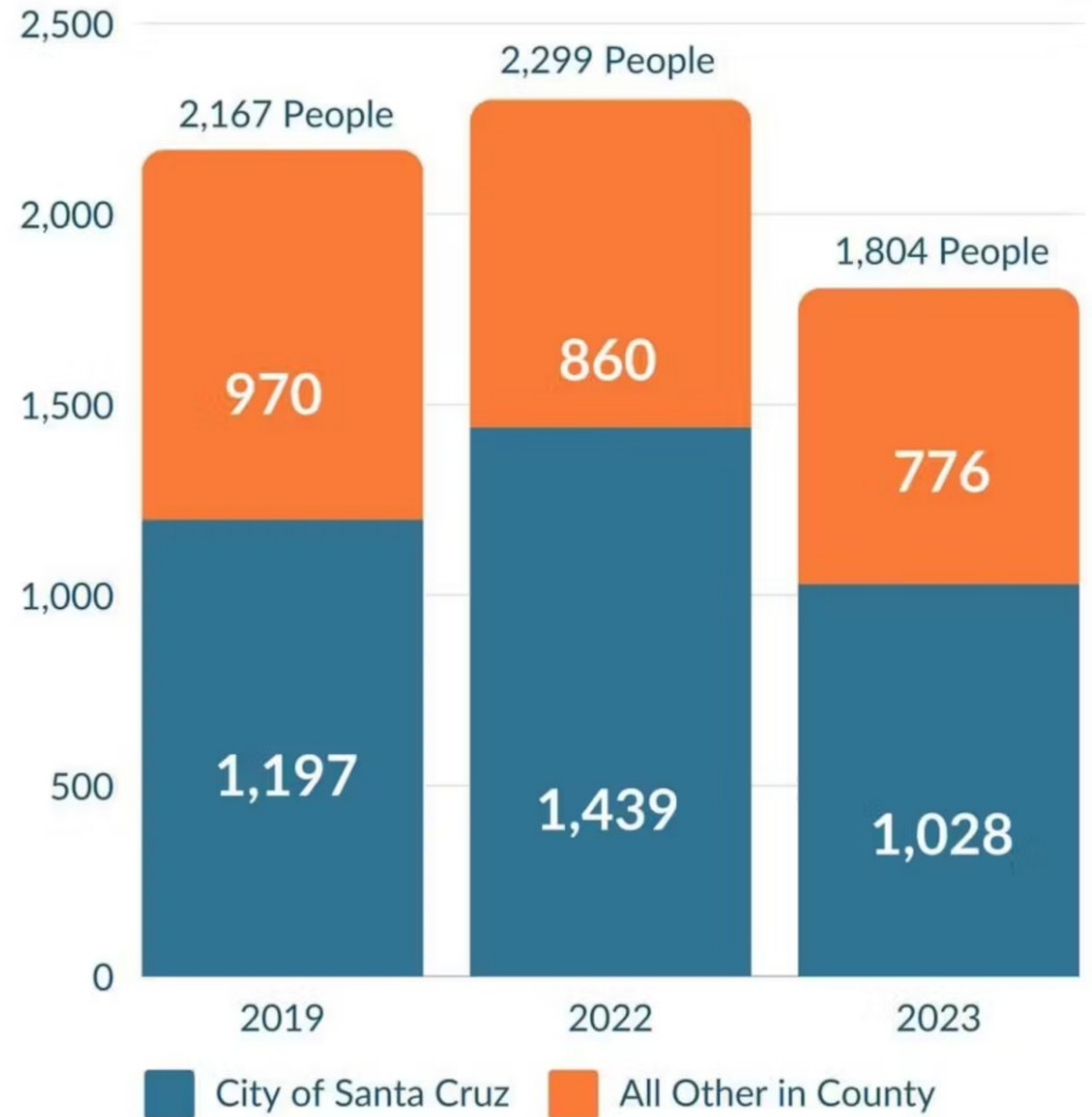
- 1 Homelessness Response Action Plan
- 2 Priority Programs & Program Outcomes
- 3 Goals for the Next Year



Public Sector Relationships



Total Homeless Population in Santa Cruz County

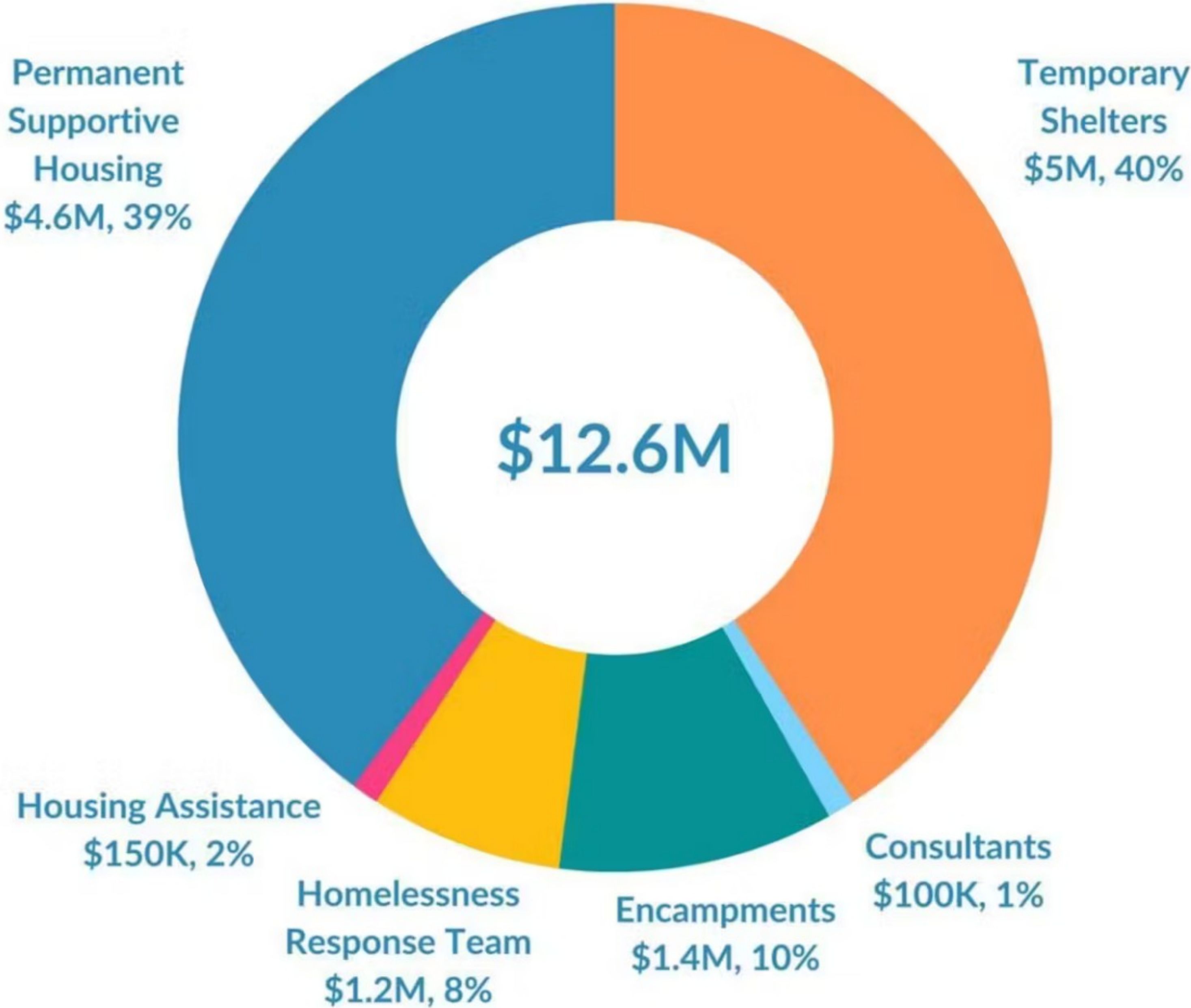




Homelessness Response Three-Year Action Plan

Adopted by the City Council in March 2022 to guide and focus the City's efforts on homelessness.

\$14M State & \$4.6M ARPA Expenditures





City of Santa Cruz Homelessness Response Field Division

- Outreach Workers
- Public Works Field Crew
- Public Safety Team

**Big
Wins**

29%
decrease

**in unhoused
Santa Cruz citizens
since 2022**



870

**New Affordable
Housing Units**



74

**People in Long-Term
Stable Housing**

More
Big
Wins



725

**Emergency Beds
During Severe
Weather Events**



724

**Tons of Refuse
Removed from
Public Spaces**



77

**People Have
Reconnected with
Family & Friends**



185

**Tent-based Safe
Sleeping Spaces**

Our Programs



Safe Sleeping Programs

- 1220 River Street Transitional Community Camp
- City Overlook at the Armory



Safe Parking Programs

- Overnight Oversized Vehicle Parking Downtown
- Long-term Oversized Vehicle Parking at the Armory



Severe Weather Shelters

- Civic Auditorium
- Depot Park
- Future Plans

1220 River Street Transitional Community Camp

- Opened in Summer 2022
- Low barrier shelter with communal setting and case management
- Served 72 people to date
- Housed 22 people (30% of participants)



Outreach Team

- Meet people where they are
- Engage with 30–40 people each day, throughout the City
- Build relationships & assess needs of people
- Connect people to services & shelter



Our Programs

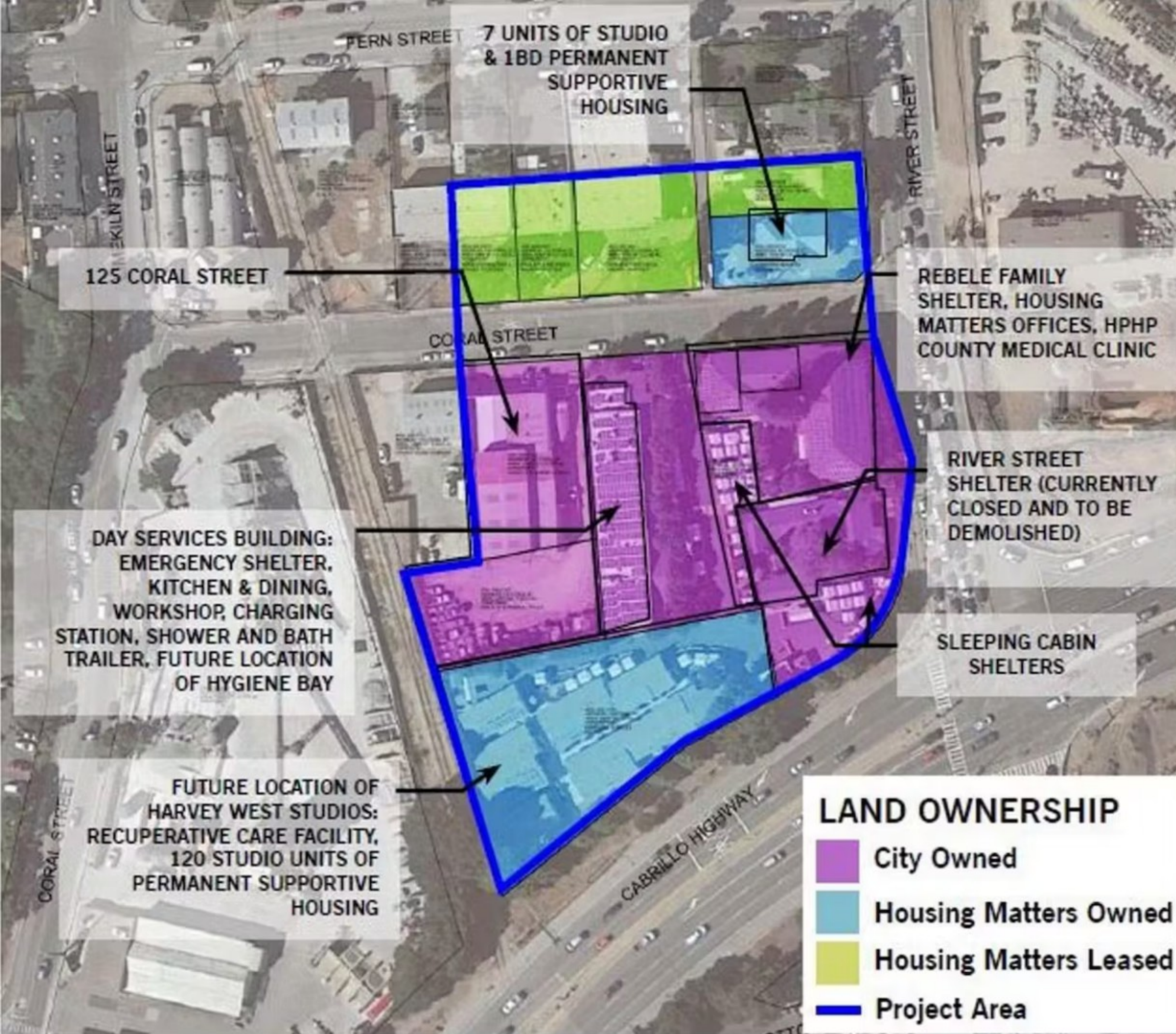
Permanent, Affordable, and Supportive Housing

- 870+ affordable housing units in process
- Santa Cruz met the 5th Cycle RHNA goals — **only 6% of cities across the state hit those goals**
- Pro-housing designation from the State of California
- Partnering with community organizations to provide on-site services



Increasing Capacity in our Community

- Hygiene Bay remodel at Housing Matters
- Acquisition and visioning process of 125 Coral Street and future navigation center



Addressing the Impact of Encampments

- Dedicated Public Works and Public Safety teams
- City-wide service including open spaces, neighborhoods, and beaches



Returning Public Space to Full Community Use

- 725 tons of trash and debris removed
- 22,000 needles safely collected



Priority Projects for 2024

- Reduce the impact of encampments
- Develop Storage Program
- Plan for Severe Weather Shelter Program
- Continue support for:
 - Safe Sleeping Program
 - Safe Parking Program
 - Outreach services

What's Next

- Obtain ongoing sustainable funding
- Collaborate with the County
- Plan for the next 3 years
- Support our existing programs
- Proceed with planning for future Navigation Center
- Prioritize Permanent Supportive Housing





74

**People in Long-Term
Stable Housing**



77

**People Have
Reconnected with
Family & Friends**



870

**New Affordable
Housing Units**

29%
decrease

**in unhoused
Santa Cruz citizens
since 2022**



Scan for more info!

STAY IN TOUCH

- Sign up for the Homelessness Response Newsletter
- CityofSantaCruz.com/homelessness

Discussion Directions



Break up into two groups with Vice Mayor Golder and Councilmember Kalantari-Johnson.



Use Large poster boards and small sticky notes to answer the following prompt questions.

Prompt questions:

- What improvements would you like to see in this area?
- What improvements have you seen that are most exciting?